

Fine Jewellery, Watches & Silver, 21st May, 2026 09:30

- 1 A gem-set enamel brooch, the scrollwork mount with white and blue enamel ribbons, centred with an applied foliate motif set with garnet and turquoise cabochons, suspending box link tassels, brooch fittings to the reverse, yellow metal testing as 18ct, 4.4 cm wide, 6.5 grams.
Please note: Unless otherwise stated, lots have been tested using an electronic tester. This is a surface test only and is not a guarantee of metal purity. **£200-300**



- 2 A pair of pearl and diamond drop earrings, each earring set with three old-cut diamonds, of graduated sizes, terminated with a cultured pearl either side, with hook fittings, in yellow metal surface tested as 9ct; 2.5 grams.
Please note: Unless otherwise stated, lots have been tested using an electronic tester. This is a surface test only and is not a guarantee of metal purity. **£200-300**



- 3 A 19th century topaz and diamond ring, featuring a central oval faceted foiled back pink topaz, in a closed collet setting, with two rose cut diamonds, claw set, with a swirling pattern engraved to the surround, testing as low-carat, with evidence of repairs and solder, ring size Q, weight 1.5 grams.
Please note: Unless otherwise stated, lots have been tested using an electronic tester. This is a surface test only and is not a guarantee of metal purity. **£300-500**



- 4 A collection of early 19th century memorial jewellery, including, a hairwork and seed pearl ring, engraved to the reverse 'M A Vetty, ob April 6th 1838 AE 17', ring size J, testing as 15ct gold, weight 2.7 grams, a hair work panel brooch, engraved to the reverse 'Mary Wilmin, born 10th April 1745, Died 29th August 1831?', testing as 15ct gold, weight 4.2 grams, and a foliate pendant/brooch with seed pearls and three old cut diamonds, testing as 9ct gold and base metal, weight 4.7 grams.
Please note: Unless otherwise stated, lots have been tested using an electronic tester. This is a surface test only and is not a guarantee of metal purity. **£300-500**



- 5 A diamond five-stone ring, claw-set with cushion-shaped diamonds, the largest to the centre, approximately 0.90ct total, mounted in 18ct yellow gold, stamped with rubbed maker's mark and Birmingham hallmark, ring size R, gross weight 3.95grams **£400-600**



Fine Jewellery, Watches & Silver, 21st May, 2026 09:30

- 6 An Early Victorian mourning fichu pin, of rectangular form with repousse scrolls, centred with a glazed hairwork panel, brooch fittings and engravings to verso, yellow metal testing as 18ct, 2.5 cm long, 3.5 grams.
Please note: Unless otherwise stated, lots have been tested using an electronic tester. This is a surface test only and is not a guarantee of metal purity. **£150-250**



- 7 A pair of Georgian paste cufflinks and six buttons en suite, each circular-cut colourless paste in foiled closed-back setting, mounted in white metal surface testing as silver, diameter 1.3cm, gross weight 21.73 grams (7). **£300-500**



- 8 A Victorian amethyst fichu pin and an Edwardian hairwork mourning ring; the pin comprising an oval-cut amethyst of 14.7 x 9.5 mm, in a surround with sabre finish, beaded decorations and a floral border, brooch fittings to the back, unmarked yellow metal testing as 18ct, 2.6 cm wide; the mourning ring centred with a bevelled square onyx panel and split pearl highlight, to an engraved flat shank with pierced segments encasing braided hairwork, set in 15ct yellow gold, Birmingham 1905, size O½; total weight of items 7.2 grams. (2)



- Please note: Unless otherwise stated, lots have been tested using an electronic tester. This is a surface test only and is not a guarantee of metal purity. **£300-500**

- 10 A diamond cluster ring, featuring an old cut diamond to the centre and a halo of single cut diamonds surrounding, the larger central diamond weight approximately 0.20 ct, all claw set, in white and yellow metal, stamped "18ct", ring size N, weight 3.1 grams. **£200-300**



- 11 A Victorian Etruscan revival mourning gem-set brooch/pendant and earring suite, the central gypsy-set rose-cut diamond, flanked by similarly-set circular-cut sapphires, with beading and ropetwist detail throughout, stamped 15ct, together with a pair of earrings en suite, to hook posts, brooch length 4.2cm, earring length 1.3cm, gross weight 4.87gms (2) **£300-500**



Fine Jewellery, Watches & Silver, 21st May, 2026 09:30

- 12 A diamond floral cluster ring, claw-set throughout with brilliant-cut diamonds, approximately 1.70cts total, mounted in white and yellow metal, stamped 18ct, ring size Q 1/2, gross weight 4.63 grams.
This lot is being sold on behalf of Cancer Research UK, with all hammer proceeds going to charity. **£500-700**



- 13 A Spanish late 18th-century cross pendant, the Iberian cross set with table-cut emeralds in closed-back settings, with a separate slider and later chain, yellow metal surface testing as 18ct, pendant 4.8 x 3.1cm, slide 1.5 x 1.5 cm, chain 55.0 cm, gross weight 10.1 grams. (One emerald deficient).
Please note: Unless otherwise stated, lots have been tested using an electronic tester. This is a surface test only and is not a guarantee of metal purity. **£1,200-1,800**



- 14 A Victorian enamel and split pearl bracelet, the lozenge-shaped centrepiece with scrollwork frame and a blue enamel border, embellished with split pearls in pinched collets, to hinged and engraved oval links with enamel florette spacers, completed with a concealed tongue clasp, unmarked yellow metal surface testing as 18ct, inner diameter 6.0 cm, centrepiece 3.8 x 2.8 cm, 24.8 grams.
Please note: Unless otherwise stated, lots have been tested using an electronic tester. This is a surface test only and is not a guarantee of metal purity. **£1,200-1,800**



- 15 A Victorian navette shaped diamond ring, circa 1880/90s, featuring nineteen old mine-cut diamonds, the principle three stones weighing an estimated 0.26ct, 0.48ct and 0.25ct, each diamond in a claw setting, with scroll work detailing to shoulders, in 18ct yellow gold, ring size O 1/2, weight 8.2 grams. **£600-800**



- 16 A sapphire and diamond five-stone ring, claw-set with three graduated cushion-shaped sapphires, the largest to the centre, interspersed by two similarly-shaped diamonds, approximately 0.05ct total, mounted in 18ct yellow gold, stamped with indistinct hallmark, maker's mark possibly SM & Co., ring size M, gross weight 3.04 grams. **£200-300**



Fine Jewellery, Watches & Silver, 21st May, 2026 09:30

- 17 A late 19th century locket brooch, of circular form with scalloped edges, the centre detailed with granulation and twisted wirework, in yellow metal, the reverse marked '9ct', with a vacant glazed compartment to reverse, to pin and C clasp fitting, brooch measuring 3.7cm x 3.0cm, 6.5 grams. **£150-250**



- 18 Three antique brooches, including, a Victorian circular brooch with buckle design detailed with turquoise, surface testing as 9ct, a bar brooch featuring an agate cabochon encircled by cannetille design, surface testing as 9ct, and an amethyst bar brooch, surface testing as 9ct, total weight 11.4 grams (3). Please note: Unless otherwise stated, lots have been tested using an electronic tester. This is a surface test only and is not a guarantee of metal purity. **£200-300**



- 19 A Victorian diamond snake ring, the coiled snake with gypsy-set cushion-shaped diamonds to the head, the eyes highlighted with old brilliant-cut diamonds, one deficient, approximately 0.15ct total, mounted in 18ct yellow gold, stamped with rubbed Birmingham hallmark, ring size P, gross weight 5.15 grams. **£300-500**



- 20 An Art Nouveau pearl fringe necklace, featuring a series of graduated links of a stylised foliate design, interspersed with five pearl drops (untested), tapering to a spring-ring clasp and jump ring with French eagle head assay mark for 18ct gold, measures 40.00 cm, 15.1 grams. **£1,200-1,800**



- 21 A late Victorian diamond and ruby brooch, of scrolled foliate design, the openwork mount encrusted with old-cut diamonds and rose-cut diamond points, centred with a cushion-cut ruby in collet with twisted cable edge, measures 6.7 x 4.7 mm, unmarked metal surface testing as silver on 18ct, 4.6 x 2.7 cm, 12.9 grams. Please note: Unless otherwise stated, lots have been tested using an electronic tester. This is a surface test only and is not a guarantee of metal purity. **£600-800**



Fine Jewellery, Watches & Silver, 21st May, 2026 09:30

- 22 An 18ct ruby and diamond set ring, featuring three oval-cut rubies, interspersed with old-cut diamonds, to a scrolled gallery, ring size O and a diamond crossover ring, the central diamond measuring approximately 3.5mm, to a millegrained bezel of white metal, and a band of yellow metal stamped "18ct", ring size M, total weight 4.9 grams. (2) **£300-500**



- 23 A diamond-set sweetheart brooch, with central fused grenade set with rose-cut diamonds, in a floral and foliate surround, accented with diamonds and pink paste, in a gilt metal mount, brooch fitting to the reverse (pin fitting surface tested as 14ct); 17.5 grams **£500-700**



- 24 A ruby, garnet and diamond ring, including two oval rubies and one garnet, claw set, detailed with four diamond chips, unmarked, testing as 18ct yellow gold, ring size N.5, weight 3.3 grams.
Please note: Unless otherwise stated, lots have been tested using an electronic tester. This is a surface test only and is not a guarantee of metal purity. **£250-350**



- 25 An Edwardian seed pearl necklace and brooch, of foliate design, in a fitted case, the pedant measures approximately 7.0cm including the bale, the pearl strand measuring 34.0cm and the brooch 3.5 x 3.5cm with a pin fitting and C clasp, total weight 18.8 grams. **£200-300**



- 26 A turquoise and pearl ring, in a foliate cluster design, with engraved split shoulders, hallmarked 9ct gold, London 1987, ring size L, weight 3.6 grams. **£200-300**



Fine Jewellery, Watches & Silver, 21st May, 2026 09:30

- 27 A pair of pearl and diamond-set cluster earrings, of arc design, with a row of round brilliant diamonds and cultured pearls, in white metal marked '14K', with hinged ear clips to the reverse; 11.0 grams **£400-600**



- 28 A diamond bar brooch, featuring an old mine cut diamond, in a claw setting, estimated diamond weight 0.70 carats, set into silver and gold, with a hook clasp, brooch length 4.5 cm, weight 3.0 grams, with a small fitted case signed Hamilton and Inches Edinburgh. **£300-500**



- 29 An opal and diamond dress ring, set with three precious opal oval cabochons, displaying good play of colour with flashes of green, blue and orange, the largest measuring 8.0 x 5.5 mm, flanked to either side by four old-cut diamonds of approximately 2mm each, the remaining opals measuring 5.5 x 4.5 mm, set within a galleried mount in 18ct yellow gold, with British Hallmarks for 18ct gold, size S, 3.9 grams. **£400-600**



- 30 An Edwardian peridot, ruby and seed pearl pendant, the central peridot measuring approximately 7.6mm x 5.2mm, in a yellow metal mount stamped '15ct', together with a 19th Century rock crystal and pearl monogram pendant, with script initial 'P' to the interior, in a yellow metal mount surface tested as 9ct; 7.5 grams
Please note: Unless otherwise stated, lots have been tested using an electronic tester. This is a surface test only and is not a guarantee of metal purity. **£300-500**



- 31 A late 19th Century hinged bangle, the heart-shaped love knot with chased detail, stamped '9ct', to a slide-in depress clasp with safety catch (broken), inner diameter 5.5cm, gross weight 5.85 grams. **£160-220**



Fine Jewellery, Watches & Silver, 21st May, 2026 09:30

- 32 A diamond cluster ring, of bi-coloured design, centrally claw-set with a brilliant-cut diamond, approximately 0.40ct, within a surround of seven similarly-cut and set diamonds, approximately 0.90ct total, stamped 18ct and Plat, ring size O, gross weight 2.82grams
This lot is being sold on behalf of Cancer Research UK, with all hammer proceeds going to charity. **£300-500**



- 33 An opal and diamond brooch, of openwork design, the millegrain collet-set circular cabochon opal, to similarly-set old brilliant-cut diamonds at each cardinal point, approximately 0.20ct total, to elongated arms with scroll detail, mounted in yellow 15ct gold, stamped with Chester hallmark, length 4.4cm, gross weight 3.82grams **£250-350**



- 34 An Edwardian bangle, the hollow bangle with central beaded detail, further detailed with knife edge finish, the hinged bangle completed with tongue and clip clasp and safety chain, stamped '9ct', inner bangle diameter approximately 5.5cm, 6.2 grams. **£200-300**



- 35 An emerald and diamond ring, featuring five oval faceted emeralds, with small rose cut diamonds between, claw set, unmarked but testing as 18ct yellow gold, ring size Q, weight 4.2 grams.
Please note: Unless otherwise stated, lots have been tested using an electronic tester. This is a surface test only and is not a guarantee of metal purity. **£500-700**



- 36 An Edwardian gem-set scroll pendant on chain, openwork motif set with circular-cut green pastes and split pearls, on a loop bail stamped '9ct', 4.0 cm drop length, on a 41.0 cm long quatrefoil-shaped paperclip chain with spring-ring clasp also stamped '9ct', 3.2 grams. **£150-250**



Fine Jewellery, Watches & Silver, 21st May, 2026 09:30

- 37 An early 20th Century bangle, of interwoven design, the hinged hollow bangle leading to a push bar clasp and safety chain, in yellow metal stamped '9ct', inner diameter measuring approximately 62mm, in a fitted box; 6.5 grams **£200-300**



- 38 A sapphire and diamond three-stone ring, the central rectangular-cut sapphire flanked by old brilliant-cut diamonds, approximately 0.15ct total, mounted in white and yellow metal, surface testing as 18ct, and stamped Plat, engraved to the inner hoop SHS-GWW 3.2.45, ring size K, gross weight 2.60 grams.
Please note: Unless otherwise stated, lots have been tested using an electronic tester. This is a surface test only and is not a guarantee of metal purity. **£120-180**



- 39 A five-stone diamond bar brooch, comprising five claw-set old-cut diamond, of graduating sizes with an estimated total diamond weight of 0.55ct, evenly spaced on a knife edge bar in yellow metal marked '15ct', to a later added pin fitting with C clasp and additional safety chain, bar measuring 5.2cm in length, 3.7 grams. **£200-300**



- 40 An early 20th century sapphire and diamond ring, with a central rectangular blue sapphire, surrounded by single cut diamonds, in 18ct yellow and white gold, ring size J.5, weight 2.2 grams. **£300-500**



- 41 An early 20th century gem-set plaque brooch, of pierced design, millegrain-set throughout, centrally collet-set with an old brilliant-cut diamond, approximately 0.30ct, within a surround of calibre-cut blue and brown sapphires, highlighted throughout with rose-cut white sapphires and diamonds, mounted in white and yellow metal, surface testing as platinum on 18ct, length 5.5cm, gross weight 6.3 grams.
Please note: Unless otherwise stated, lots have been tested using an electronic tester. This is a surface test only and is not a guarantee of metal purity. **£300-500**



Fine Jewellery, Watches & Silver, 21st May, 2026 09:30

- 42 An Art Deco sapphire and diamond panel ring, the scalloped oval ring head centred with an oval-cut sapphire, encompassed by a frame of single-cut diamonds flanking calibre-cut sapphires, in millgrained collets between chenier shoulders, in white metal stamped '18ct PLAT', ring head 1.1 x 1.0 cm, size J, 2.1 grams. **£200-300**



- 43 A late 19th Century diamond brooch/pendant, the six rayed star centrally claw-set with a cluster of cushion-shaped and old brilliant-cut diamonds, each arm similarly-set with slightly graduated similarly and rose-cut diamonds, interspersed by knife-edge bars terminating in a single old brilliant-cut diamond in pinched collet setting, approximately 0.75ct total, the back surface testing as 15ct, the top surface testing as white base metal, diameter 2.7cm, gross weight 8.1 grams. **£500-700**



- 44 An early 20th century pearl and diamond ring, featuring a central pearl (untested) measuring approximately 9.21 x 9.05 x 8.9 mm, in a single cut diamond setting, the pearl in a closed button back mount, the ring testing as platinum, ring size M, weight 4.2 grams.

Please note: Unless otherwise stated, lots have been tested using an electronic tester. This is a surface test only and is not a guarantee of metal purity. **£800-1,200**



- 45 A diamond bar brooch, circa 1915, the central millegrain collet-set old brilliant-cut diamond, weighing approximately 0.40ct, within an openwork lozenge-shaped surround, set throughout with similarly-cut and cushion-shaped diamonds, approximately 1.15cts total, within a millegrain border, mounted in white metal stamped with French assay mark for platinum, length 8cm, gross weight 6.94 grams **£600-800**



- 46 A diamond solitaire ring, featuring an old-cut diamond of estimated 1.34ct, in a white metal eight claw setting, to chenier shoulders, leading to an 18ct white gold ring shank, ring size N, 4.0 grams. **£800-1,200**



Fine Jewellery, Watches & Silver, 21st May, 2026 09:30

- 47 A diamond brooch, of geometric and pierced design, centrally collet-set with an old brilliant-cut diamond flanked by similarly-set marquise-cut diamonds and claw-set throughout with old brilliant, single and square-cut diamonds, approximately 1.85cts total, mounted in white metal, stamped with French "Minerva" mark for gold, width 4.6cm, gross weight 11.09 grams.
This lot is being sold on behalf of Cancer Research UK, with all hammer proceeds going to charity. **£600-800**



- 48 An Art Deco diamond-set link bracelet, angular panels connected with links, bead-set with old-cut and single-cut diamonds, with an estimated total weight of 1.00ct, leading to an expandable 'Britannic' bracelet, completed with a tongue clasp, in unmarked white metal testing as platinum, overall length 16.0 cm, 9.8 grams.
Please note: Unless otherwise stated, lots have been tested using an electronic tester. This is a surface test only and is not a guarantee of metal purity. **£500-700**



- 49 A diamond-set bow brooch, of scrolling design, the bow composed of claw-set round brilliant diamonds, the tails grain-set with round brilliant diamonds, with brooch pin fitting to the reverse, in white metal surface tested as 18ct, pin surface tested as 9ct, measuring approximately 47mm across; 6.0 grams
Please note: Unless otherwise stated, lots have been tested using an electronic tester. This is a surface test only and is not a guarantee of metal purity. **£300-500**



- 50 A diamond set stick pin, set with tapered baguettes to form a lozenge shape, the stick pin measuring approximately 6.3cm long, the diamond top measuring 1.0cm x 0.5cm, unmarked but testing as 18ct, weight 1.6 grams (not including pin protector). **£300-500**



- 51 A diamond set plaque brooch, of geometric design, set with old and single cut diamonds, the principle diamond weighing approximately 0.20 carats, the brooch measures approximately 4.5 x 2.0 cm, in unmarked white metal, surface testing as platinum to the front and 18ct to the reverse, with pin and barrel clasp, weight 12.4 grams.
Please note: Unless otherwise stated, lots have been tested using an electronic tester. This is a surface test only and is not a guarantee of metal purity. **£500-700**



Fine Jewellery, Watches & Silver, 21st May, 2026 09:30

- 52 An Art Deco aquamarine and diamond dress ring, circa 1925, the rectangular emerald cut aquamarine in claw setting, measuring 25.0 x 19.0 x 11.8mm, estimated to weigh 40.46ct, between the bifurcated shoulders set with four baguette cut diamonds and ten single cut diamonds, with estimated diamond weight of 0.50ct, in unmarked precious white metal surface testing as platinum, ring size (with sizing beads) J1/2, gross weight 15.6 grams.

Please note: Unless otherwise stated, lots have been tested using an electronic tester. This is a surface test only and is not a guarantee of metal purity. **£4,000-6,000**



- 53 A double-row natural saltwater pearl necklace, comprising two strands of off-round pearls, with an average of 3.7mm in diameter, hand knotted and completed with a square box clasp grain-set with twenty-five graduating old-cut diamonds, the clasp in yellow metal surface testing as 18ct, the necklace measuring 34.0cm in length, 13.5 grams.

Together with a report from The Gem & Pearl Laboratory which states the pearls are natural saltwater.

Please note: Unless otherwise stated, lots have been tested using an electronic tester. This is a surface test only and is not a guarantee of metal purity. **£2,000-3,000**



- 54 An emerald and diamond ring, circa 1940s, featuring a central emerald measuring 10.29mm x 7.55mm x 5.32mm with an estimated carat weight of 3.34 carats, with round brilliant-cut diamonds to the shoulders, unmarked, testing as 18ct yellow gold, ring size S, weight 7.5 grams.

Please note: Unless otherwise stated, lots have been tested using an electronic tester. This is a surface test only and is not a guarantee of metal purity. **£2,000-3,000**



- 55 A fancy link bracelet, the articulated lantern-shaped links of Florentine finish, in bi-colour metal depicting lozenge and quartefoil designs, marked '750', with push bar clasp and safety catch, measuring approximately 19.5cm long and 3cm wide; 81.5 grams. **£5,000-7,000**



- 56 A sapphire and diamond halo ring, centred with an oval-cut sapphire of pale greyish-blue colour, approximately measuring 10.0mm x 7.7mm x 3.4mm, encircled with fourteen round brilliant-cut diamonds with an estimated total weight of 0.55ct, between floral shoulders, in yellow metal marked '14K', ring head 1.8cm x 1.5cm, size N, 4.2 grams. **£1,000-2,000**



Fine Jewellery, Watches & Silver, 21st May, 2026 09:30

- 57 A fob and chain, the fancy-link chain with Albert swivel clasps, stamped '9ct, 375', suspending a circular fob with engraved detail and shield to the centre, surmounted by a scroll, stamped with Birmingham hallmark for 9ct gold, and maker's mark HWL, pendant length 3.5cm, chain length 39.5cm, gross weight 31.03 grams. **£900-1,200**



- 58 A coin-set brooch with gem-set surround, the central coin depicting a woman with quiver of arrows, partially signed 'F. Rosumn', to a ruby and diamond surround, in bi-colour metal surface tested as silver and 18ct, with brooch pin fitting to the reverse; 5.5 grams
Please note: Unless otherwise stated, lots have been tested using an electronic tester. This is a surface test only and is not a guarantee of metal purity. **£600-800**



- 59 A diamond hinged bangle, pinched collet-set to the front with seventeen cushion-shaped diamonds, approximately 1.85cts total, mounted in white and yellow metal, testing as silver and 9ct gold, inner diameter 5.3cm, gross weight 9.09 grams.
This lot is being sold on behalf of Cancer Research UK, with all hammer proceeds going to charity. **£600-800**



- 60 A ruby and diamond ring, featuring five oval faceted rubies (treated), with single cut diamonds around, in a carved half hoop mount, in unmarked yellow metal surface testing as 9ct, ring size S, weight 4.9 grams.
Please note: Unless otherwise stated, lots have been tested using an electronic tester. This is a surface test only and is not a guarantee of metal purity. **£500-700**



- 61 A multi-gem giardinetti brooch, circa 1950s, twisted cables forming a basket, carrying floral sprays set with diamond, sapphire, emerald, ruby, cat's eye chrysoberyl and pearl, brooch fittings to the reverse, unmarked metal testing as silver on 14ct, 4.0cm x 3.5cm, 7.3 grams.
Please note: Unless otherwise stated, lots have been tested using an electronic tester. This is a surface test only and is not a guarantee of metal purity. **£300-500**



Fine Jewellery, Watches & Silver, 21st May, 2026 09:30

- 62 A diamond single-stone ring, of bi-coloured design, collet-set with an old brilliant-cut diamond, approximately 0.30ct, to a tapered band, with section detail, mounted in yellow metal, stamped 18ct, ring size Q 3/4, gross weight 5.12 grams. **£300-500**



- 63 A diamond set bar brooch, of modernist design, set with old-cut and baguette-cut diamonds, in a spray design, the brooch measures approximately 5.0cm x 1.0cm, unmarked, testing as 18ct, weight 5.6 grams.
Please note: Unless otherwise stated, lots have been tested using an electronic tester. This is a surface test only and is not a guarantee of metal purity. **£300-500**



- 64 A sapphire and diamond cluster ring, the three step-cut sapphires within a surround of 12 brilliant-cut diamonds, approximately 0.40ct total, mounted in 18ct white and yellow gold, stamped with London hallmark, ring size O 3/4, gross weight 3.82 grams. **£250-350**



- 65 A portrait pendant, the portrait depicting Mary Magdalene painted in enamel, in an ornate gold surround detailed with eight cultured pearls, the pendant measures approximately 4.0cm x 2.5 cm (including bale), unmarked but testing as 18ct, weight 10.4 grams.
Please note: Unless otherwise stated, lots have been tested using an electronic tester. This is a surface test only and is not a guarantee of metal purity. **£450-650**



- 66 An opal set bracelet; featuring three precious opal cabochons, the largest of which measuring 12.8 x 10 mm, the remaining two measuring 10.5 x 8.3 mm, all displaying spectral colours of orange, blue and green to a milky ground; bezel-set, within a hinged segment of foliate design, leading to fancy links and a tongue clasp (safety chain deficient), length approximately 17.0 cm, 9.8 grams. In fitted box. **£400-600**



Fine Jewellery, Watches & Silver, 21st May, 2026 09:30

- 67 An opal cocktail ring; featuring an oval cabochon of precious opal, displaying spectral colours of orange, blue, violet and green, measuring 2.00 x 1.45 cm in a textured mount to raised chenier shoulders and band of pink metal stamped "9ct", size Q 1/2 (with addition of ring sizer) 7.4 grams. **£400-600**



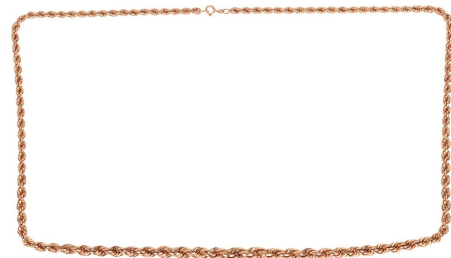
- 68 A floral brooch, modelled as a realistic orchid with pearl-set column, in yellow metal marked '18K', with brooch pin fitting to the reverse, measuring approximately 6.7mm; 10.5 grams **£600-800**



- 69 An amethyst line bracelet, featuring ten oval faceted amethysts, in a claw setting, within an ornate beaded mount/setting, in 9ct yellow gold, hallmarked London 2005, length approximately 18.5 cm, weight 17.0 grams. **£1,000-1,500**



- 70 An 18ct rope necklace, of graduated design, length approximately 82.0cm, with bolt clasp, in 18ct yellow gold, weight 31.8 grams. **£1,800-2,200**



- 71 An emerald and diamond brooch, in the style of the Ellipse collection by Dalia Daou, claw-set with nine emeralds, approximately 1ct total, and three brilliant-cut diamonds, approximately 0.15ct total, mounted in yellow polished and brushed metal, stamped with 18K, length 4.7cm, gross weight 16.54 grams. **£1,200-1,800**



Fine Jewellery, Watches & Silver, 21st May, 2026 09:30

- 72 A diamond set spray ring, featuring round brilliant-cut diamonds of graduating sizes, each in a claw setting, the head of the ring measuring approximately W2.5cm x H2.0cm x D1.0cm, in 18ct yellow gold, ring size S, weight 13.0 grams. **£800-1,200**



- 73 A 1970s emerald and diamond ring, of abstract and openwork design, claw-set to the front with five slightly graduated circular-cut emeralds, flanked by three brilliant-cut diamonds, approximately 0.30ct total, mounted in yellow metal, testing as 9ct, ring size L, gross weight 7.0 grams. Please note: Unless otherwise stated, lots have been tested using an electronic tester. This is a surface test only and is not a guarantee of metal purity. **£300-500**



- 74 An old-cut diamond solitaire ring, featuring a central claw-set old-cut diamond of estimated 0.51ct, to shoulders grain-set with rose-cut diamond chips, to a yellow metal ring shank surface testing as 18ct, ring size N, 2.7 grams. Please note: Unless otherwise stated, lots have been tested using an electronic tester. This is a surface test only and is not a guarantee of metal purity. **£300-500**



- 75 A ruby and diamond-set tie pin, of curved design, pavé-set with round brilliant diamonds and round mixed cut rubies, hinged clip and pin fitting to the reverse, in yellow metal marked '18K' and '750'; 6.36 grams **£700-900**



- 76 A citrine and diamond pendant on chain, corner claw-set with a large square step-cut citrine of 12.1mm x 12.0mm x 7.7mm, to bail collet-set with a round brilliant-cut diamond of 4.5mm, with an estimated weight of 0.33ct, 2.5cm long, on a cable link chain in yellow metal stamped '585', overall length 37.0 cm, 12.2 grams. **£800-1,200**



Fine Jewellery, Watches & Silver, 21st May, 2026 09:30

- 77 A sapphire and diamond hinged bangle, comprising four rows of circular-cut sapphires, centred with eight round brilliant-cut diamonds, with an estimated total weight of 1.60ct, closed with another half constructed with three joined knife-edged bands, completed with a concealed tongue clasp, with push-in thumbpiece and safety chain, yellow metal bearing Israeli hallmarks for 18ct, inner diameter 5.8cm, 37.2 grams. **£2,500-3,000**



- 78 An 18ct two row necklace, the necklace consisting of textured links of even size forming two rows, with a tongue and clip clasp and safety catch, in 18ct yellow gold, length approximately 48cm and 54cm, weight 69.1 grams. 68.9g **£4,000-6,000**



- 79 A citrine and aquamarine dress ring, the wide band constructed by an array of rods, centred with a circular-cut citrine, flanked by two heart-cut aquamarines, in unmarked yellow metal testing as 18ct, size L½, 12.7 grams. Please note: Unless otherwise stated, lots have been tested using an electronic tester. This is a surface test only and is not a guarantee of metal purity. **£800-1,200**



- 80 A pair of diamond and sapphire drop earrings, each suspending a collet-set pear-cut sapphire from a diamond surmount, peg and butterfly fittings, yellow metal stamped '750', 1.4 cm drop, 2.8 grams. **£200-300**



- 81 A sapphire necklace, the cable-link chain stamped '750', spectacle-set with 10 oval-shaped sapphires, length 43cm, gross weight 3.66 grams. **£200-300**



Fine Jewellery, Watches & Silver, 21st May, 2026 09:30

- 82 A diamond-set dress ring, featuring a central bezel-set round brilliant-cut diamond of estimated 0.61ct, flanked each side by grain-set panels of twenty-three round brilliant-cut diamonds, the panels interspersed centrally with a raised channel of five round brilliant-cut diamonds, in 18ct yellow gold, ring size N, 6.1 grams. **£700-900**



- 83 A bracelet, of bi-colour design, composed of pierced polished white metal Greek key symbols, between brushed white metal spacers and polished yellow metal bars, to a slide-in depress clasp, stamped '585', length 18.5cm, gross weight 22.12 grams. **£700-900**



- 84 A tri-colour necklace, featuring cross motifs in yellow metal interspersed with yellow and rose metal square motifs, necklace measuring 43.0cm in length, to an integral box clasp and additional safety catch, the clasp stamped with import marks for 9ct gold, 22.1 grams. **£600-800**



- 85 A sapphire and diamond ring, the half collet-set oval-shaped sapphire, stated weight 1.33cts, flanked by duos of brilliant-cut diamonds, approximately 0.15ct total, to flexible shoulders, mounted in yellow metal, stamped 18K, ring size K 3/4, gross weight 6.89 grams. **£500-700**



- 86 A sapphire-set bracelet, composed of oval mixed-cut dark sapphires, claw-set and interspersed with white metal connectors, leading to a push bar clasp and safety catch, in yellow metal marked '14K'; 10.5 grams **£500-700**



Fine Jewellery, Watches & Silver, 21st May, 2026 09:30

- 87 A pair of diamond-set Greek Key earrings, each composed of four links of brushed yellow metal, testing as 18ct, between brilliant-cut diamond-set borders, approximately 1.20cts total, length 2.7cm, gross weight 11.24 grams.
Please note: Unless otherwise stated, lots have been tested using an electronic tester. This is a surface test only and is not a guarantee of metal purity. **£600-800**



- 88 A sapphire-set bracelet, composed of oval mixed-cut sapphires, flanked by illusion-set round brilliant diamonds, connected with open oval links, to a lobster clasp, stamped '14k'; 8.0 grams. **£400-600**



- 89 A sapphire and diamond dress ring, the open rectangular motif channel-set with two rows of table-cut sapphires, trumpeted shoulders each set with three carre-cut diamonds, leading to a tapering flat shank in yellow metal stamped '750', Italian maker's mark for Staurino Fratelli, ring head 2.0 x 1.2 cm, size L, 7.8 grams. **£700-900**



- 90 A diamond-set Greek Key bracelet, the highly articulated row of brushed yellow metal, stamped '750', between round brilliant-cut diamond-set borders, approximately 3.25ct total, length 18.0cm, gross weight 30.71 grams. **£1,600-1,800**



- 91 A multi-gem half hoop ring, set with an oval-cut emerald, ruby, and a greenish-blue sapphire, each stone approximately measures 8.0mm x 6.0mm, interspersed with four round brilliant-cut diamond accents, shank unmarked testing as 14ct, size N½, 5.0 grams.
Please note: Unless otherwise stated, lots have been tested using an electronic tester. This is a surface test only and is not a guarantee of metal purity. **£2,000-3,000**



Fine Jewellery, Watches & Silver, 21st May, 2026 09:30

- 92 A diamond-set Greek Key collar necklace, the highly articulated row of brushed yellow metal, stamped '750', between brilliant-cut diamond-set borders to the front, approximately 4.20cts total, one diamond deficient, length 46.0cm, gross weight 79.46 grams. **£4,000-6,000**
- 93 A bangle and a ring of rams head motif design, the bangle featuring three enamelled graduated curved panels, in green, blue and orange, each detailed with twisted wire and terminated by a ram head motif, the hinged bangle completed with an integral box clasp within a ram head motif, with disguised push-button clasp, inner circumference approximately 18.0cm, in yellow metal surface testing as 18ct, 59.3 grams; The ring of rams head form detailed with ruby cabochon eyes and a single-cut diamond-set collar, the shank of wrap-around design and highlighted with green enamel, in yellow metal marked 'KR18' to inside, size J, 11.8 grams. (2). Please note: Unless otherwise stated, lots have been tested using an electronic tester. This is a surface test only and is not a guarantee of metal purity. **£4,000-6,000**
- 94 A ruby and diamond necklace, the flat curb-link chain, stamped 14K, with lobster clasp, four-claw set to the front with a cut-cornered step-cut ruby weighing approximately 0.60ct, flanked by a row of tension-set baguette-cut to two rows of brilliant-cut diamonds, diamonds approximately 0.55ct total, length 43.5cm, gross weight 6.99 grams. **£500-700**
- 95 A ruby and diamond three-stone ring, the claw-set circular ruby flanked by brilliant-cut diamonds, approximately 0.30ct total, mounted in white and yellow metal, stamped 18ct and PI, ring size S 3/4, gross weight 3.24 grams. **£250-350**



Fine Jewellery, Watches & Silver, 21st May, 2026 09:30

- 96 A fracture-filled ruby bracelet, composed of oval mixed-cut fracture-filled rubies, with white metal connectors, leading to a push bar clasp, in yellow metal marked '14K'; 9.0 grams **£450-550**



- 97 A pearl and diamond ring, with a central mabe pearl measuring approximately 8.96 x 9.00 mm, surrounded by two rows of rose cut diamonds, detailed with a mille-grain edge, with a closed back reverse button shaped, unmarked, testing as base metal, ring size L, weight 10.0 grams.

Please note: Unless otherwise stated, lots have been tested using an electronic tester. This is a surface test only and is not a guarantee of metal purity. **£300-500**



- 98 A multi-strand pearl necklace with matching bracelet, each with rectangular panels featuring three leaves set with rose cut diamonds and mille-grain edge detailing, each comprising of four strands of small cultured pearls, the bracelet measuring approximately 19.5 x 2.4 cm, the necklace measuring approximately 39/40 x 2.4 cm, both with tongue and clip clasps and a safety catch, bracelet testing as 14ct gold, the necklace testing as silver and platinum, bracelet weight 25.2 grams, necklace weight 42.8 grams, with a fitted case signed George Tarratt, Leicester.

Please note: Unless otherwise stated, lots have been tested using an electronic tester. This is a surface test only and is not a guarantee of metal purity. **£800-1,200**



- 99 A sapphire brooch/pendant, of openwork and undulating design, the central circle motif claw-set with circular-cut white sapphires, decorated with eight cushion-shaped blue sapphires in lozenge border, to a circular-cut white sapphire outer border, mounted in rose metal, testing as 9ct gold, diameter 2.7cm, gross weight 7.54 grams.

Please note: Unless otherwise stated, lots have been tested using an electronic tester. This is a surface test only and is not a guarantee of metal purity. **£300-500**



- 100 A diamond-set brooch, featuring a stylised ribbon form of bark-texture, claw-set with graduating round brilliant-cut diamonds, estimated total carat weight of 0.94ct, to pin and trombone clasp, brooch measuring 4.3cm x 2.0cm, 7.2 grams. **£700-900**



Fine Jewellery, Watches & Silver, 21st May, 2026 09:30

- 101 A diamond cluster ring, illusion-set with a central princess-cut diamond within a surround of four marquise-cut diamonds, approximately 2.0ct total, mounted in 18ct white gold, stamped with partial Birmingham hallmark and European convention mark, ring size M, gross weight 5.08 grams.
Please note: Unless otherwise stated, all diamond gradings are for guideline purposes only. All stones are graded within their mounts and results are subject to change following the stone(s) being unset. **£1,500-2,500**



- 102 A sapphire and diamond dress ring, of bombe design, pave-set with circular-cut sapphires and round brilliant-cut diamond highlights, approximately 1.20cts total, mounted in 18ct white gold, stamped with partial UK hallmark and '750', ring size T 1/2, gross weight 18.95 grams. **£1,500-2,000**



- 103 A diamond single-stone ring, the four-claw set cut-cornered step-cut diamond, weighing approximately 2.06cts, mounted in white metal, stamped Plat, ring size M 3/4, gross weight 3.27 grams.

This lot is being sold on behalf of Cancer Research UK, with all hammer proceeds going to charity. **£1,000-1,500**



- 104 A pair of gem-set drop earrings, with spray surmounts leading to geometrical drops, set with synthetic spinel, leading to an illusion-set round brilliant diamond, with post fittings and hinged backs to the reverse, in white metal surface tested as 18ct; 5.4 grams
Please note: Unless otherwise stated, lots have been tested using an electronic tester. This is a surface test only and is not a guarantee of metal purity. **£400-600**



- 105 A sapphire and diamond-set bracelet, composed of oval mixed-cut sapphires, interspersed with baguette-cut diamonds, leading to a push bar clasp with safety catch, in white metal marked '585'; 8.0 grams **£600-800**



Fine Jewellery, Watches & Silver, 21st May, 2026 09:30

- 106 A diamond and sapphire cocktail ring, by Carnet, featuring a panel of round-cut blue sapphires of varying sizes, grain set in blued metal, overlaid by an abstract linear motif pavé-set with rose-cut diamonds, encircling a central portrait-cut diamond, the panel with a border of rose-cut diamonds, curving around the edges of the panel, to a ring shank fully pavé-set with rose-cut diamonds, ring shank marked 'PT950', ring size Q, boxed, 12.3 grams. **£2,500-3,500**



- 107 A diamond-set horseshoe pendant necklace, set throughout with brilliant-cut diamonds, approximately 0.35ct, and centrally four-claw set with a loose hung similarly-cut single diamond, approximately 0.70ct, to an 18ct white gold foxtail-link chain, stamped with Birmingham partial hallmark and maker's mark CCL, chain length 45cm, pendant length 1.7cm, gross weight 3.64 grams. **£700-900**



- 108 A tanzanite-set bracelet, composed of ten oval mixed-cut tanzanites, each flanked by two round brilliant diamonds, connected with bar links and leading to a push bar clasp with safety catch, in white metal marked '14K'; 6.0 grams **£300-500**



- 109 A diamond ring, the central four-claw set brilliant-cut diamond of yellow tint, stated weight 0.51ct, between similarly-cut and set diamonds shoulders, remaining diamonds approximately 0.60ct total, mounted in white metal, stamped 21K, ring size O, gross weight 2.41 grams. **£200-300**



- 110 A diamond and sapphire pendant, of open work foliate design, set with single cut diamonds in white and rose gold, detailed with eight pink pear cut sapphires and a central peach coloured tourmaline, testing as 18ct, the pendant measuring approximately 6.5 x 4.5 cm, weight 19.5 grams. Please note: Unless otherwise stated, lots have been tested using an electronic tester. This is a surface test only and is not a guarantee of metal purity. **£500-700**



Fine Jewellery, Watches & Silver, 21st May, 2026 09:30

- 111 A diamond-set hinged bangle, half-set with claw-set round brilliant-cut diamonds, completed with an integral box clasp and additional safety catch, in rose metal marked '18K', inner bangle diameter approximately 5.7mm x 5.0mm, bangle thickness 1.35 mm, weight 6.5 grams. **£400-600**



- 112 A tanzanite and diamond cluster ring, the four-claw set square cushion-shaped tanzanite, weighing approximately 1.55cts, within a surround of 40, approximately 0.42ct total, mounted in 18ct yellow gold, stamped with partial Birmingham hallmark and maker's mark R&C, ring size L 1/2, gross weight 4.31 grams. **£500-700**



- 113 A tanzanite-set bracelet, composed of clusters of round-cut tanzanites, with cross link connectors, to a lobster clasp, in yellow metal marked '14K'; 7.5 grams. **£350-550**



- 114 A diamond cluster ring, of bi-coloured design, composed of seven brilliant-cut diamonds in shared claw setting, stated weight 2.04cts total, mounted in 18ct white and yellow gold, stamped with Birmingham hallmark and maker's mark PJA, ring size L 1/2, gross weight 6.51 grams. **£600-800**



- 115 A pair of sapphire and diamond cluster earrings, each oval-shaped sapphire in claw setting, within a surround of 12 brilliant-cut diamonds, approximately 0.30ct total, mounted in 18ct white gold, stamped with UK hallmark, to post fittings, length 1.1 cm, gross weight 2.12 grams. **£300-500**



Fine Jewellery, Watches & Silver, 21st May, 2026 09:30

- 116 An 18ct diamond-set pendant in the form of a stylised star; set with a central round brilliant cut diamond of approximately 0.25ct, surrounded by six rays of graduated diamonds with sizes ranging from 2.5mm to 2mm, tapering to an elongated point, topped by a diamond set bail, in 18ct white gold with a laser hallmark for Sheffield and makers mark "GX", drop 4.3cm, weight 4.9 grams **£400-600**



- 117 An aquamarine and diamond bracelet by Angara, four-claw set to the front with 9 circular-cut aquamarine, stated weight 0.90ct total, interspersed with similarly-set brilliant-cut diamonds, stated weight 0.11ct total, to a fox-tail link chain with adjustable bolo clasp, stamped with London hallmark for 14ct gold, with maker's box and report, length 29cm, gross weight 4.12 grams.



Accompanied by an Angara certificate of authenticity stating that the aquamarines have been heat treated, and diamonds are H, SI2. Report numbered #SB0343AQD **£250-350**

- 118 A diamond single-stone ring, the four-claw set princess cut diamond, weighing approximately 0.60ct, mounted in 18ct white gold, stamped with partial London and Birmingham hallmark, European convention mark and makers' marks CCL and FH, ring size J 1/2, gross weight 3.27 grams. **£500-700**



- 119 An aquamarine and diamond pendant by Rocks & Co., the four-claw set rectangular cushion-shaped aquamarine, weighing approximately 13.7cts, surmounted by a trio of brilliant-cut diamond, two graduated hoops, each set with similarly-cut diamonds, and highlighted to the centre with a further trio of brilliant-cut diamonds, approximately 1ct total, mounted in 18ct yellow and white gold, stamped with maker's mark and partial Birmingham hallmark, length 4.1cm, gross weight 10.66 grams **£2,500-3,500**



- 120 A diamond eternity ring, claw-set with seventeen round brilliant-cut diamonds, approximately 3.40cts total, mounted in white metal, testing as high carat, ring size N 1/2, gross weight 5.57 grams.

This lot is being sold on behalf of Cancer Research UK, with all hammer proceeds going to charity. **£1,200-1,800**



Fine Jewellery, Watches & Silver, 21st May, 2026 09:30

- 121 A pair of aquamarine and diamond cluster earrings, each claw-set oval-shaped aquamarine, within a 12 brilliant-cut diamond surround, surmounted by a single similarly-cut diamond, approximately 0.35ct total, mounted in 18ct white gold, stamped with UK hallmark, to post fittings, length 1.6cm, gross weight 3.32 grams. **£500-700**



- 122 A diamond set dress ring, featuring a central row of five round cut diamonds measuring approximately 1.8mm each, in navette-shaped mounts, bordered with a row of smaller diamonds to top and bottom, to tapered shoulders and a band of unmarked white metal, surface testing as 18ct, ring head measures approximately 20.00 x 6.75 mm, ring size P (with addition of ring sizer), 4.1 grams.
Please note: Unless otherwise stated, lots have been tested using an electronic tester. This is a surface test only and is not a guarantee of metal purity. **£200-300**



- 123 An aquamarine and diamond pendant necklace by Angara, the three-claw set heart-shaped aquamarine, stated weight 0.90ct, within an undulating surround and surmount claw-set throughout with brilliant-cut diamonds, stated weight 0.12ct total, to a cable-link chain, mounted in 18ct white gold, stamped with London hallmark, together with box and report, pendant length 2.3cm, chain length 45cm, gross weight 4.91 grams.



- Accompanied by a certificate of authenticity stating that the aquamarine has been heat treated, and the diamonds are H, SI2. Report numbered #SP1084AQD **£300-500**

- 124 A diamond single-stone ring, the four-claw set princess-cut diamond, weighing 0.47ct, mounted in platinum, stamped with partial Birmingham hallmark and European convention mark, ring size L 3/4, gross weight 3.35 grams.
Accompanied by a GIA diamond dossier copy, stating that the diamond is H, VVS2, numbered 2175511878, dated 1st March 2016. **£400-600**



- 125 An aquamarine and diamond ring, the claw-set cut-cornered step-cut aquamarine, weighing approximately 11.55cts, flanked by trios of brilliant-cut diamonds, approximately 0.30ct total, to trifurcated shoulders, mounted in white metal, testing as 18ct gold, ring size N 1/2, gross weight 12.39 grams.
Please note: Unless otherwise stated, lots have been tested using an electronic tester. This is a surface test only and is not a guarantee of metal purity. **£600-800**



Fine Jewellery, Watches & Silver, 21st May, 2026 09:30

- 126 An aquamarine and diamond pendant, the cut-cornered step-cut aquamarine, weighing approximately 12.40cts, surmounted by a trio of single-cut diamonds, approximately 0.09ct total, mounted in white metal, surface testing as 18ct gold, length 3cm, gross weight 5.70 grams.
Please note: Unless otherwise stated, lots have been tested using an electronic tester. This is a surface test only and is not a guarantee of metal purity. **£500-700**



- 127 A diamond single-stone ring and diamond half-hoop eternity ring; the four-claw set princess-cut diamond ring, with a diamond carat weight of 0.73ct, mounted in platinum, stamped with maker's mark DG, Sheffield assay mark; the platinum band inserted with a row of eight brilliant-cut diamonds, approximately 0.04ct total, mounted in platinum, engraved to the inside of hoop '*Katerina & Christopher 1st December 2015*', Edinburgh assay mark, ring sizes F (sizing beads) & I 1/2, gross weight 7.6 grams
Accompanied by a GIA report stating that the diamond weighing 0.73ct, is E, VS1, report numbered 6167013411, dated 2nd April 2014 **£600-800**



- 128 A diamond floral brooch, composed of two flowers in bloom and leaves, each decorated with brilliant and single-cut diamonds, approximately 0.35ct total, mounted in 9ct white gold, stamped with Birmingham hallmark, length 5.1cm, gross weight 6.26 grams.
This lot is being sold on behalf of Cancer Research UK, with all hammer proceeds going to charity. **£300-500**



- 129 A diamond single-stone ring, the three-claw set pear-shaped diamond, weighing approximately 0.75ct, mounted in white metal, stamped 18K, ring size J 3/4, gross weight 2.91 grams. **£400-600**



- 130 A diamond single-stone pendant necklace, the cable-link chain with spring-ring clasp stamped '950', suspending a collet-set brilliant-cut diamond, approximately 0.60ct total, length 41cm, gross weight 2.37 grams. **£200-300**



Fine Jewellery, Watches & Silver, 21st May, 2026 09:30

- 131 A diamond single-stone ring, the four-claw set brilliant-cut diamond, weighing approximately 0.65ct, between six similarly-cut diamond shoulders, approximately 0.30ct total, mounted in 14ct white gold, stamped with partial Sheffield and Birmingham hallmark, maker's mark CCL and CAS, ring size L 1/2, gross weight 2.65 grams. **£600-800**



- 132 A diamond solitaire ring, featuring a round brilliant-cut diamond of estimated 0.53ct, in a three-claw setting, to a palladium ring shank, ring size L, 2.7 grams.
Please note: Unless otherwise stated, all diamond gradings are for guideline purposes only. All stones are graded within their mounts and results are subject to change following the stone(s) being unset.
Please note: Unless otherwise stated, all diamond gradings are for guideline purposes only. All stones are graded within their mounts and results are subject to change following the stone(s) being unset. **£200-300**



- 133 A diamond set dress ring, featuring three rows of grain-set round brilliant-cut diamonds, to a white metal ring shank marked '750', ring size N, 11.9 grams. **£700-900**



- 134 Boucheron - A diamond-set Kaa Double Trouble snake ring, the head pave-set with brilliant-cut diamonds, the eyes decorated with cabochon pear-shaped onyx, the body gypsy-set with thirteen brilliant-cut diamonds, stated weight 0.25ct total, signed, numbered 'E26478', stamped '750', with maker's case and box, and authenticity card, ring size L / M1/2, gross weight 14.18 grams. **£2,500-3,000**



- 135 A diamond three-stone ring, with an estimated total diamond weight of 1.50ct, comprising three graduated round brilliant-cut diamonds in claw setting, between tapered shoulders to D-profile shank, in yellow metal stamped '18ct', size J 1/2, 3.9 grams. **£700-900**



Fine Jewellery, Watches & Silver, 21st May, 2026 09:30

- 136 An emerald and diamond pendant, in a cluster style, with a central oval faceted emerald, claw set, measuring approximately 13.70mm x 11.09mm x 3.90mm, with a border of round brilliant-cut diamonds the largest approximately 0.35ct, all claw set, the pendant measures 3.0cm x 2.0cm (including bale), the setting unmarked, testing as mostly silver with rhodium plating, the chain stamped 9ct, weight 9.0 grams. **£2,500-3,500**



- 137 A diamond three-stone ring, claw-set with graduated cushion-shaped diamonds, the largest to the centre, approximately 0.85ct, remaining diamonds approximately 0.55ct total, mounted in white metal, stamped 18K, ring size L 1/2, gross weight 4.43gms

This lot is being sold on behalf of Cancer Research UK, with all hammer proceeds going to charity. **£800-1,200**



- 138 A diamond-set dress ring, of scrolling design, featuring interwoven rows of baguette-cut and round brilliant-cut diamonds, in a white metal mount marked '750', size L; 5.1 grams **£250-350**



- 139 A diamond-set egg pendant necklace, in the style of Fabergé, claw-set throughout with brilliant-cut diamonds, approximately 1.35cts total, to a similarly-set suspensory loop, suspended from a white metal trace-link chain, stamped F and 14K, pendant length 3cm, chain length 38cm, gross weight 5.5 grams **£400-600**



- 140 An emerald and diamond ring, the claw-set step-cut emerald, flanked by trios of brilliant-cut diamonds, approximately 0.40ct total, mounted in white metal, stamped 750, ring size P 1/4, gross weight 3.12 grams. **£300-500**



Fine Jewellery, Watches & Silver, 21st May, 2026 09:30

- 141 A fracture-filled emerald and diamond line bracelet, with oval mixed-cut fracture-filled emeralds, alternating with baguette-cut diamond clusters, in yellow metal marked '14K', with push bar clasp and safety catch; 15.5 grams **£700-1,000**



- 142 A synthetic emerald, sapphire and diamond ring, the double four claw-set square-cut synthetic emerald, approximately 2cts, flanked by collet-set square-cut sapphires, millergain-set throughout with brilliant-cut diamonds, the gallery highlighted with similarly-cut diamonds, approximately 0.38ct total, mounted in white metal, testing as 9ct gold, ring size I 1/2, gross weight 5.05 grams.
Please note: Unless otherwise stated, lots have been tested using an electronic tester. This is a surface test only and is not a guarantee of metal purity. **£300-500**



- 143 A gem-set bracelet, composed of marquise-cut emeralds, in semi-bezel mounts set in oval links, connected with illusion-set diamonds, to a push bar clasp and safety catch, in yellow metal stamped '14K'; 10.0 grams **£500-700**



- 144 An emerald and diamond cluster ring, composed of three slightly graduated oval-shaped emeralds, the largest to the centre, within an undulating surround of 18 brilliant-cut diamonds approximately 0.63ct total, mounted in yellow metal, surface testing as 14ct gold, ring size Q 1/2, gross weight 3.79 grams.
Please note: Unless otherwise stated, lots have been tested using an electronic tester. This is a surface test only and is not a guarantee of metal purity. **£400-600**



- 145 A diamond-set line bracelet, composed of rows of round brilliant diamonds, interspersed by curved bar links, leading to a push bar clasp with safety catch, in yellow metal stamped '10K', 11.5 grams **£500-700**



Fine Jewellery, Watches & Silver, 21st May, 2026 09:30

- 146 An emerald and diamond cluster pendant on chain, the pendant with integral bail comprising a square step-cut emerald of 6.6 x 6.5 x 4.5 mm, set below a trillion-cut diamond in a diamond surround, with an estimated total weight of 0.70ct, 1.6 cm drop, on a 38.0 cm long fine curb link chain with spring-ring clasp, yellow metal surface testing as 14ct, 3.2 grams.
Please note: Unless otherwise stated, lots have been tested using an electronic tester. This is a surface test only and is not a guarantee of metal purity. **£700-900**



- 147 A sapphire-set bracelet, composed of oval mixed-cut sapphires, each flanked by two illusion-set diamonds, connected with bar links, to a push bar clasp and safety catch, in yellow metal marked '14K'; length 18cm, 6.5 grams **£300-500**



- 148 An emerald and ruby three stone ring, featuring a central round ruby and two round emeralds, claw set, ring size R, in 18ct yellow gold, weight 3.4 grams. **£350-550**



- 149 A gem-set bracelet, composed of oval mixed-cut flux-healed rubies, alternating with diamond-set floral-style links, leading to an integrated push bar clasp with safety clasp, in bi-colour metal stamped '14K'; 9.5 grams **£500-700**



- 150 A peridot and diamond necklace, the fancy flat curb-link chain with lobster clasp, stamped 10K, loose hung to the front with a claw-set pear-shaped peridot, weighing approximately 1.75cts, to a v-shaped surmount decorated with 11 brilliant-cut diamonds, approximately 0.35ct total, length 41.3cm, gross weight 6.43 grams. **£300-500**



Fine Jewellery, Watches & Silver, 21st May, 2026 09:30

- 151 A gem-set line bracelet, comprising synthetic rubies, cubic zirconia and other synthetic gemstones, in a rainbow design, all claw set, with tongue and clip clasp and a safety catch, stamped and testing as 18ct, bearing Indian assay marks, length approximately 16cm, weight 14.0 grams.
Please note: Unless otherwise stated, lots have been tested using an electronic tester. This is a surface test only and is not a guarantee of metal purity. **£700-900**



- 152 A mystic topaz and diamond pendant on chain, claw-set with an oval-cut mystic topaz of bluish-green colour, measures 17.8 x 13.2 x 8.9 mm, below a 3.2 mm round brilliant-cut diamond surmount with tapering bail, estimated weight 0.12ct, in unmarked yellow metal testing as 18ct, 3.2 cm drop length; on a 59.0 cm long figaro chain in yellow metal stamped '750', 14.1 grams.
Please note: Unless otherwise stated, lots have been tested using an electronic tester. This is a surface test only and is not a guarantee of metal purity. **£800-1,200**



- 153 A double-row curb link bracelet, completed with a box clasp with two safety catches, in yellow metal marked '750', overall length 20.0 cm, 11.2 grams. **£700-900**



- 154 A multi-gem triple cluster ring, collet-set with an oval cabochon of sapphire, ruby and an emerald, within a border of small round-cut diamonds, in unmarked yellow metal testing as 18ct, size N, 8.2 grams.
Please note: Unless otherwise stated, lots have been tested using an electronic tester. This is a surface test only and is not a guarantee of metal purity. **£1,200-1,800**



- 155 A gem-set long necklace and matching bracelet, each set with cabochon emeralds, rubies, blue sapphires and round brilliant-cut diamonds, in a rub-over setting with rope edge detailing, necklace length approximately 74.0cm, bracelet length 21.0cm, both the necklace and bracelet unmarked, testing as 18ct, the bracelet with a later added 9ct clasp, total weight 104.5 grams.
Please note: Unless otherwise stated, lots have been tested using an electronic tester. This is a surface test only and is not a guarantee of metal purity. **£6,000-8,000**



Fine Jewellery, Watches & Silver, 21st May, 2026 09:30

- 156 An emerald, ruby and diamond ring, featuring a principle heart shaped emerald, in a rub over setting, surrounded by round and tapered baguette-cut diamonds, and tapered baguette rubies, in claw and chanel settings, the ring measures approximately W23.0mm x H14.2mm x D7.3mm, ring size P, weight 12.5 grams. **£4,000-6,000**



- 157 A charm bracelet, composed of a fancy link bracelet, surface tested as 18ct, clasp tested as 9ct and jump ring marked '9ct', with twenty-five various charms, some stamped '375' or '750', including a lifebuoy ring, an enamel elephant, a camel, a Masonic compass and square, a radio, an aeroplane, a shamrock, the Eiffel tower, a chimney sweep and other items; 47.5 grams
Please note: Unless otherwise stated, lots have been tested using an electronic tester. This is a surface test only and is not a guarantee of metal purity. **£2,000-3,000**



- 158 A sapphire cabochon dress ring, comprising a pointed oval sapphire cabochon of 8.6 x 6.3 x 4.0 mm, set to a ribbed mount to tapering shank, in yellow metal marked '18K', size P, 10.0 grams. **£1,000-1,500**



- 159 A gem-set pendant, featuring a diamond-set surmount with radiating engraved detail, suspending two orbs from sections of chain, the orbs depicting scenes of recreation, featuring human forms, foliate motifs and animals, detailed with diamonds, rubies and emeralds, the base of each orb marked '750' and 'PS', drop length 5.5cm, 11.2 grams. **£600-800**



- 160 A stylised gem set ring, of double bombe design, depicting a bear, a martini glass and other foliate decoration, set with emeralds and rubies in a rub over setting, in yellow metal stamped 750, with makers marks 'PS', ring size P, weight 15.9 grams **£800-1,200**



Fine Jewellery, Watches & Silver, 21st May, 2026 09:30

- 161 A gold charm bracelet, including a 1911 half Sovereign, an articulated bus charm, a carriage charm, a Mini car charm, a violin charm, a St Christopher charm and others, charms mostly 9ct gold, on a 9ct gold curb chain, total weight 93.6 grams. **£3,000-4,000**



- 162 A 1915 Austrian 4 Ducat coin pendant, mounted in a twisted rope surround with a suspension loop in 18ct, British assay marks, 4.5 cm wide, in a Kutchinsky case, 25.5 grams. **£1,500-2,500**



- 163 An 18ct gold bracelet, consisting of wide fancy link design, some polished and some textured sections, with tongue and clip clasp and safety catch, length approximately 20.0cm, width 2.3cm, stamped '750', weight 31.4 grams. **£1,500-2,000**



- 164 An 18ct rope twist chain necklace, alternating rose, white and yellow gold, marked 750, testing as 18ct gold, chain length approximately 60cm, (clasp broken/lacking), weight 14.8 grams.
Please note: Unless otherwise stated, lots have been tested using an electronic tester. This is a surface test only and is not a guarantee of metal purity. **£700-900**



- 165 A foliate brooch set with cultured pearls, comprising ten large off-round cultured pearls with bluish overtones, largest measures 11.0mm in diameter, in mount in the form of a foliate spray, bright-cut and millgrain detailing, brooch fittings to the reverse, in yellow metal stamped 'K14' and maker's mark 'K.T', 7.6 cm long, 17.8 grams. **£200-300**



Fine Jewellery, Watches & Silver, 21st May, 2026 09:30

- 166 A cultured pearl and diamond ring in 18ct yellow gold, centred with a round cultured pearl of 8.4 mm, between diamond-set tapering shoulders, British assay marks, size M, 4.7 grams. **£200-300**



- 167 A single-strand cultured pearl necklace and earring suite by Mappin & Webb, the row of 6.95mm - 7.35mm rose and silver cultured pearl, strung and knotted, to a polished 18ct yellow gold barrel-shaped clasp, stamped with UK hallmark and European convention mark, maker's mark, together with a pair of earrings en suite, to post fittings, with seven spare pearls, maker's case, necklace length 41.5cm, gross weight 32.94 grams (3) **£300-500**



- 168 A diamond and cultured pearl brow brooch, claw-set throughout with brilliant-cut diamonds, and highlighted by a loose hung 7.95mm cultured pearl surmounted by a single brilliant-cut diamond, approximately 0.42ct total, mounted in yellow and white metal, stamped '750', length 2.8cm, gross weight 6.8 grams. **£400-600**



- 169 A curb link watch chain, in bi-colour metal, leading to an Albert clasp, marked '18ct', measuring approximately 33cm; 9.5 grams **£400-600**



- 170 A mabe pearl and diamond set pendant, featuring a white mabe pearl measuring approximately 15.55mm x 15.37mm x 10.34mm, with a modernist mount detailed with eight round brilliant-cut diamonds, and a small bale loop, testing as 18ct, weight 11.7 grams.
Please note: Unless otherwise stated, lots have been tested using an electronic tester. This is a surface test only and is not a guarantee of metal purity. **£400-600**



Fine Jewellery, Watches & Silver, 21st May, 2026 09:30

- 171 A white cultured South Sea pearl necklace, comprising a row of large graduated baroque pearls, to a gilt clasp set with cubic zirconias, stamped '925', overall length 51.5cm, 93.0 grams. **£300-500**



- 172 A diamond half eternity ring, channel-set to the front with nine slightly graduated brilliant-cut diamonds, stated weight 1.0ct, mounted in platinum, stamped with maker's mark SG, European convention mark and partial Birmingham hallmark, ring size I, gross weight 7.40 grams. **£800-1,200**



- 173 A pearl and diamond ring, featuring a central white South Sea cultured pearl, measuring approximately 13.95mm x 13.99mm, in a four claw setting (also glued), surrounded by round brilliant-cut diamonds, claw set, ring size M, in platinum, weight 14.4 grams. **£400-600**



- 174 A pair of cultured South Sea pearl stud earrings and pendant set; each containing a large round pearl of 12.0mm, in silver body colour, earrings fitted with peg and butterflies; pendant with a tapered bail, yellow metal stamped 14ct; total weight of items 8.4 grams. (2) **£300-500**



- 175 A single stone diamond ring, with a round brilliant-cut diamond, measuring approximately 5.6mm x 3.6mm, with an estimated diamond weight of approximately 0.65 carats, in a six claw setting, in 18ct yellow gold, ring size M, weight 2.7 grams. **£400-600**



Fine Jewellery, Watches & Silver, 21st May, 2026 09:30

- 176 A cultured pearl and diamond dress ring, the 11.75mm golden cultured pearl, between brushed 18ct yellow gold stylised leaf shoulders, to trifurcated shoulders, the gallery decorated with brilliant-cut diamonds, stated weight 0.28ct total, stamped with London hallmark and European convention mark, ring size K 3/4, gross weight 10.26 grams. **£1,200-1,800**



- 177 A bismarck link bracelet, completed with a conforming box clasp with two safety catches, in yellow metal bearing Swedish assay marks for 18ct, overall length 20.5 cm, 6.0 grams. **£400-600**



- 178 A marquise-cut diamond solitaire ring in 18ct gold, corner-set with a single diamond with an estimated weight of 0.40ct, to a tapering flat shank, size L 1/2, 3.6 grams.

Please note: Unless otherwise stated, all diamond gradings are for guideline purposes only. All stones are graded within their mounts and results are subject to change following the stone(s) being unset.

Please note: Unless otherwise stated, all diamond gradings are for guideline purposes only. All stones are graded within their mounts and results are subject to change following the stone(s) being unset. **£300-500**



- 179 A treated brown cultured South Sea pearl necklace, comprising an array of round pearls in graduated sizes, from 11.9-14.2 mm, hand-knotted to a gilt hook clasp set with CZs, overall length 48.5 cm, 106.0 grams. **£500-600**



- 180 A diamond cluster ring, of bi-coloured design, the central collet-set brilliant-cut diamond within a surround of fourteen similarly-cut diamonds in claw and half collet setting, approximately 0.55ct total, mounted in 18ct white and yellow gold, stamped with London hallmark, ring size N, gross weight 4.05 grams. **£250-350**



Fine Jewellery, Watches & Silver, 21st May, 2026 09:30

- 181 A diamond-set pendant necklace, the fine box-link chain with springring clasp, stamped 18K, suspending a round brilliant-cut diamond-set fancy loop, approximately 0.25ct total, stamped '18K', chain length 45.0cm, pendant length 3.0cm, gross weight 3.80 grams. **£250-350**



- 182 A treated green and golden cultured South Sea pearl necklace, with a row of large baroque cultured pearls in alternating colours, to a quatrefoil hook clasp set with cubic zirconias, stamped '925', overall length 66.5 cm, 156.5 grams. **£400-600**



- 183 A pair of golden South Sea cultured pearl earrings, ring and pendant suite, each 11.35mm - 12mm golden cultured pearl to yellow metal mounts, stamped '14K', the earrings to post fittings, ring size M 1/2, pendant length 2.0cm, gross weight 11.1 grams (3). **£400-600**



- 184 Annoushka - A freshwater pearl and diamond Mythology Happy Face pendant necklace, the openwork circular frame loose hung with two 3.2mm cultured pearls, the mouth claw-set with nine brilliant-cut diamonds, stated weight 0.08ct total, mounted in 18ct yellow gold, signed and stamped with London hallmark, suspended from yellow metal "Mini Cable" chain, signed and stamped '585', with maker's cases and boxes, pendant length 2.6cm, chain length 45cm, gross weight 5.94 grams. **£400-600**

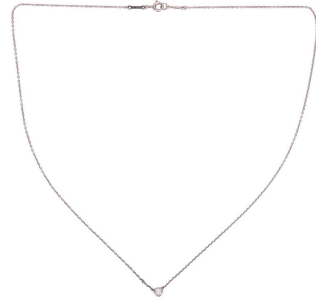


- 185 Tiffany & Co. - An Atlas ring, the brushed 18ct white gold band with applied Roman numerals between polished borders, signed and stamped '750', ring size O, gross weight 4.10 grams. **£400-600**



Fine Jewellery, Watches & Silver, 21st May, 2026 09:30

- 186 Tiffany & Co. - A diamond single-stone pendant "Diamonds by the Yard" necklace by Elsa Peretti for Tiffany & Co., the cable link chain signed and stamped PT950, suspending a collet-set brilliant-cut diamond, approximately 0.12ct, length 42cm, gross weight 2.87 grams. **£300-500**



- 187 Tiffany & Co - A diamond solitaire ring, featuring a central claw-set Lucida-cut diamond of estimated 0.43ct, to a platinum ring shank, ring size Q 1/2, boxed, 4.5 grams.
Please note: Unless otherwise stated, all diamond gradings are for guideline purposes only. All stones are graded within their mounts and results are subject to change following the stone(s) being unset. **£400-600**



- 188 Tiffany & Co. - A pair of diamond "Diamonds by the Yard" earstuds, each collet-set brilliant-cut diamond, weighing approximately 0.20ct total, to post fittings, rubbed Peretti signature and stamped PT950, gross weight 1.24 grams. **£300-500**



- 189 Tiffany & Co. - A diamond solitaire ring, claw-set with a round brilliant-cut diamond of 0.46ct, to a knife-edged shank in white metal stamped 'PT950', signed and numbered, inscription to diamond facet, size L, 4.7 grams.
With box, no papers.
Please note: Unless otherwise stated, all diamond gradings are for guideline purposes only. All stones are graded within their mounts and results are subject to change following the stone(s) being unset. **£400-600**



- 190 Tiffany & Co. - A 'Return to Tiffany' pendant necklace, the 18ct yellow gold cable-link chain completed with spring-ring clasp, suspending a heart pendant, engraved 'Please return to Tiffany & Co. New York 750', signed and stamped with London hallmark and '750', with maker's case, chain length 41.0cm, gross weight 4.93 grams. **£500-700**



Fine Jewellery, Watches & Silver, 21st May, 2026 09:30

- 191 Boodles - A diamond-set hinged bangle, composed of seven sections, each four-claw set with round brilliant-cut diamonds, stated weight 0.63ct total, mounted in 18ct rose gold stamped with maker's mark, London hallmark, numbered '112222310' and signed, inner diameter 5.4cm, gross weight 22.53 grams. **£2,000-3,000**



- 192 Boodles - A diamond-set hinged bangle, composed of five sections, each claw-set with brilliant-cut diamonds, to a single collet-set push brilliant-cut diamond, stated weight 1.40cts, mounted in 18ct white gold, signed, stamped with maker's mark, London hallmark and numbered 1122221154, inner diameter 6cm, gross weight 26.68 grams. **£3,000-5,000**



- 193 Boodles - A diamond-set Blossom Triple ring, depicting Sakura blossom, each flower is set with brilliant-cut diamonds, stated weight 0.38ct total, mounted in 18ct white gold, signed, stamped with London hallmark, European convention mark, numbered 0115221422, together with maker's case and box, ring size L, gross weight 8.84 grams. **£1,000-1,500**



- 194 Cartier - A 'LOVE' bangle in 18ct yellow gold, signed Cartier 750, bearing Swiss St Bernards dogs head, size 18, inner bangle diameter approximately 6.0cm, width 6.10mm, with a Cartier box, Cartier certificate dated 21.01.2005 with serial number, with two insurance valuations from Cartier dated 2013 and 2022, and a Cartier bag; weight 31.5 grams.

RRP: £7,050 **£2,000-3,000**



- 195 Cartier - A 'LOVE' bangle in 18ct white gold and set with four round brilliant-cut diamonds, composed of two rigid arcs with screw motifs, closure designed with two functional screws, opening by the supplied screwdriver, signed and stamped with Swiss convention marks, 4.8cm at smallest point and 5.7cm at widest point, width 6.0 mm, accompanied by box and papers, 34.6 grams.

RRP: £12,200 **£3,000-5,000**



Fine Jewellery, Watches & Silver, 21st May, 2026 09:30

- 196 Cartier - A rainbow 'LOVE' bangle, featuring ten round faceted stones, including, yellow, orange and pink sapphires, an amethyst and a green garnet, signed 'Cartier 750', bearing Swiss St Bernard dog head mark, size 18, inner bangle diameter 6.0cm, width 6.0mm, accompanied by Cartier box and outer box, with screw driver, with Cartier certificate dated 24.09.2011 and serial number, with two insurance valuations from Cartier, dated 2013 and 2022, and a Cartier bag; weight 31.3 grams. **£4,000-6,000**



- 197 Theo Fennell - A diamond-set closed bangle in 18ct yellow gold, comprising a heavy D-profile band, flush-set with twelve brilliant-cut diamonds with an estimated total weight of 0.68ct, signed and hallmarked, London 2006, inner diameter 7.1 cm, 37.0 grams. With box and pouch, no papers. **£3,000-5,000**



- 198 Theo Fennell - A sapphire and diamond cross pendant on chain, the tubular cross encrusted with circular-cut sapphires throughout, accentuated with brilliant-cut diamonds on the cross lashing and terminations, estimated diamond weight 0.75ct, to a tapering hinged sapphire-set bail, 4.8 cm drop; suspended on a cable link chain with diamond-set spherical intervals, estimated total weight 0.51ct, 46.0 cm in length, set in 18ct white gold, British assay marks, total weight of item 38.3 grams. With box and pouch, no papers. **£3,000-5,000**



- 199 An oval-cut diamond eternity ring, comprising eighteen claw-set diamonds with an estimated carat weight of 3.94ct, in white metal testing as platinum, size K, 7.7 grams
Please note: Unless otherwise stated, lots have been tested using an electronic tester. This is a surface test only and is not a guarantee of metal purity. **£1,500-2,500**



- 200 A garnet and diamond collar necklace, composed of two rows of four-claw set oval-shaped garnets, decorated with three clusters of cushion-shaped garnets within a surround of nineteen round brilliant-cut diamonds, approximately 2.35cts total, mounted in white metal stamped 14K, length 42.3cm, gross weight 59.76 grams. **£2,000-3,000**



Fine Jewellery, Watches & Silver, 21st May, 2026 09:30

- 201 A diamond eternity ring, composed of eighteen round brilliant-cut diamonds, in shared claw setting, approximately 5.50cts total, mounted in 18ct white gold, stamped with partial Birmingham hallmark and maker's mark CCL, ring size R, gross weight 6.26 grams.
Please note: Unless otherwise stated, all diamond gradings are for guideline purposes only. All stones are graded within their mounts and results are subject to change following the stone(s) being unset. **£3,000-5,000**



- 202 A ruby and diamond cluster ring, centred with an unheated ruby of 2.27ct, in a surround composed of round brilliant-cut and baguette-cut diamonds, with an estimated total weight of 1.10ct, chener shoulders leading to D-profile shank, in unmarked white metal stamped '18ct&Plat', ring head 1.6cm x 1.6cm, size O, 6.0 grams.
Accompanied by a certificate from The Gem & Pearl Laboratory confirming Thailand locality, with no indications of heat treatments. **£3,500-5,500**



- 203 A diamond pendant on chain, featuring a claw-set round brilliant-cut diamond of estimated 2.32ct, in a white metal ten claw setting surface testing as platinum, to a white metal cable-link chain completed with a spring ring clasp marked '14K', chain measuring 40.5cm in length, 2.4 grams.
Please note: Unless otherwise stated, lots have been tested using an electronic tester. This is a surface test only and is not a guarantee of metal purity.
Please note: Unless otherwise stated, all diamond gradings are for guideline purposes only. All stones are graded within their mounts and results are subject to change following the stone(s) being unset. **£2,000-3,000**



- 204 A yellow diamond halo ring, the central radiant-cut diamond with an estimated weight of 2.15ct, in a conforming surround between tapered shoulders encrusted with round brilliant-cut white diamonds, to a flat shank in unmarked white metal testing as platinum, ring head 1.3cm x 1.1cm, size N, 5.7 grams.
Please note: Unless otherwise stated, lots have been tested using an electronic tester. This is a surface test only and is not a guarantee of metal purity.
Please note: Unless otherwise stated, all diamond gradings are for guideline purposes only. All stones are graded within their mounts and results are subject to change following the stone(s) being unset. **£7,000-9,000**



Fine Jewellery, Watches & Silver, 21st May, 2026 09:30

- 205 A round brilliant-cut diamond solitaire ring, the diamond with an approximate weight of 3.50ct, with an estimated colour and clarity of M and VVS1, in a claw setting between tapered chenier shoulders, leading to a D-profile shank in unmarked white metal testing as platinum, size N½, 4.6 grams.
Please note: Unless otherwise stated, lots have been tested using an electronic tester. This is a surface test only and is not a guarantee of metal purity.
Please note: Unless otherwise stated, all diamond gradings are for guideline purposes only. All stones are graded within their mounts and results are subject to change following the stone(s) being unset. **£8,000-12,000**



- 206 An emerald-cut diamond ring, featuring an emerald-cut diamond of approximately 4.20ct, with an estimated colour and clarity of F and VVS2, claw-set between stepped shoulders, channel-set with elongated diamond baguettes, leading to a D-profile shank in unmarked white metal testing as platinum, size P, 6.2 grams.
Please note: Unless otherwise stated, lots have been tested using an electronic tester. This is a surface test only and is not a guarantee of metal purity.
Please note: Unless otherwise stated, all diamond gradings are for guideline purposes only. All stones are graded within their mounts and results are subject to change following the stone(s) being unset. **£25,000-35,000**



- 207 **Baume & Mercier - Dress Watch with Tiger's Eye Dial**
Reference: 501.795
Serial: 36662 T
Bezel: Crosshatch Texture
Case Material: Yellow Metal marked '750'
Case Diameter: Approximately 23mm
Dial: Tiger's Eye, Dauphine Hands
Numerals: None
Crown: Fluted
Movement: Baume & Mercier Calibre BM 775 17-Jewel Manual Wind Movement
Strap: Integral Mesh-Link Bracelet with Abstract Texture
Inner Circumference: Approximately 15.5cm
Buckle: Textured Fold-Over Clasp, marked '750' and '474'
Box: No
Papers: No
Gross Weight: 51.8 grams
For your protection, every watch with an estimate over £1,500 is checked against the Watch Register. This is an independent company who hold the world's largest, most established, international database of lost, stolen, and fake watches, containing data compiled over 35 years - providing Dawsons' buyers with complete peace of mind. **£3,000-5,000**



Fine Jewellery, Watches & Silver, 21st May, 2026 09:30

208 Bueche Girod - 18ct Gold Diamond-Set Cocktail Watch

Reference: 1375

Bezel: Diamond-Set, Approximately 2.3ct Total

Case Material: 18ct Gold

Case Diameter: Approximately 16mm, Octagonal

Dial: Gold-Tone, Dauphine Hands

Numerals: None

Crown: Push-In (To Case Back)

Strap: Fancy-Link Rope-Twist Bracelet

Buckle: Fold-Over Clasp

Box: No

Papers: No

Gross Weight: 28.0 grams

For your protection, every watch with an estimate over £1,500 is checked against the Watch Register. This is an independent company who hold the world's largest, most established, international database of lost, stolen, and fake watches, containing data compiled over 35 years - providing Dawsons' buyers with complete peace of mind. **£1,500-2,500**



209 Bueche Girod - 9ct Gold Dress Watch

Year: Hallmarked 1981

Bezel: Smooth

Case Material: 9ct Gold

Case Diameter: 30mm

Dial: Gold-Tone, Sunburst, Dauphine Hands

Numerals: Baton

Crown: Fluted

Movement: Bueche Girod (ETA ESA Calibre 950.001) Six-Jewel Quartz Movement

Strap: Integral Fancy-Link Texture Mesh Bracelet

Inner Circumference: Approximately 18.0cm

Buckle: 9ct Gold Fold-Over Clasp

Box: Yes

Papers: No

Gross Weight: Approximately 50.5 grams **£1,000-1,500**



210 Doxa - Dress Watch

Reference: 889.627

Bezel: Smooth

Case Material: Rose Metal marked '14K'

Case Diameter: Approximately 35mm

Dial: Silvered, Brushed, Leaf Hands

Numerals: Arabic at twelve o'clock, Baton at three, six and nine o'clock, Dot, Minute Track

Crown: Fluted

Movement: Doxa Calibre 11 1/2 (ETA Calibre 1147) Jewelled Manual Wind Movement

Strap: After-Market Fancy-Link Bracelet

Inner Circumference: Approximately 19.0cm - 20.0cm

Buckle: After-Market Fold-Over Clasp, marked '14K'

Box: No

Papers: No

Gross Weight: 54.4 grams **£800-1,200**



Fine Jewellery, Watches & Silver, 21st May, 2026 09:30

- 211 **Jaeger-LeCoultre - 9ct Gold Dress Watch**
Reference: 15842
Serial: 331258
Year: Hallmarked 1950
Bezel: Smooth
Case Material: 9ct Gold
Case Diameter: Approximately 30mm
Dial: Silvered, Pointed Baton Hands
Numerals: Arabic at twelve, three, six and nine o'clock, Baton, Minute Track
Crown: Signed, Fluted (After-Market)
Movement: Jaeger-LeCoultre Calibre P480/C Jewelled Manual Wind Movement, numbered '659162'
Complication: Seconds Subsidiary Dial at six o'clock
Strap: After-Market Gold-Plated Expandable Bracelet
Inner Circumference: Approximately 16.5cm (Not Expanded)
Buckle: None
Box: No
Papers: No
Gross Weight: 50.4 grams **£300-500**



- 212 **Zenith - 9ct Dress Watch**
Reference: 41387
Serial: 6295770 (To Movement)
Year: Hallmarked 1966
Bezel: Smooth
Case Material: 9ct Gold
Case Diameter: Approximately 22mm
Dial: White, Pointed Baton Hands
Numerals: Arabic, Minute Track
Crown: Signed, Fluted
Movement: Zenith Calibre 88 Jewelled Manual Wind Movement, numbered '6295770'
Complication: Seconds Subsidiary Dial at six o'clock
Strap: After-Market 9ct Gold Brick-Link Bracelet
Inner Circumference: Approximately 16.0cm - 16.5cm
Buckle: 9ct Gold Fold-Over Clasp with Additional Safety Catch
Box: No
Papers: No
Gross Weight: 25.7 grams **£300-500**



- 213 **Hamilton - Diamond-Set Cocktail Watch**
Serial: SD62827
Bezel: Diamond-Set
Case Material: White Metal marked '14K Gold'
Case Diameter: Approximately 14mm x 18mm
Dial: White, Dauphine Hands
Numerals: Arabic at twelve and six o'clock, Dot, Baton
Crown: Fluted
Movement: Hamilton Calibre 757 22-Jewel manual Wind Movement
Strap: Articulated Diamond-Set Bracelet
Inner Circumference: Approximately 17.0cm
Buckle: Fold-Over Clasp marked '14K' and '90891'
Box: No
Papers: No
Gross Weight: 26.2 grams **£800-1,200**



Fine Jewellery, Watches & Silver, 21st May, 2026 09:30

- 214 **Rolex - Dress Watch**
Reference: 2622
Serial: 022647
Bezel: Smooth
Case Material: Stainless Steel
Case Diameter: Approximately 13mm x 22mm
Dial: White, Poire Hands
Numerals: Arabic at twelve, three six and nine o'clock, Baton, Minute Track
Crown: Fluted
Movement: Rolex Precision 17-Jewel Manual Wind Movement
Strap: After-Market Brittanic-Link Bracelet
Inner Circumference: Approximately 16.0cm (Not Expanded)
Buckle: None
Box: No
Papers: No
Gross Weight: 14.0 grams **£300-500**



- 215 **Diamond-Set Cocktail Watch**
Bezel: Diamond-Set
Case Material: White Metal marked 'PT950'
Case Diameter: Approximately 15mm
Dial: White, Blued Hands
Numerals: Arabic, Minute Track
Crown: Fluted
Movement: 17-Jewel Manual Wind Swiss Movement, marked 'ETS. Worms'
Strap: Diamond-Set, Brittanic-Link Strap (Broken)
Box: No
Papers: No
Gross Weight: 18.6 grams **£500-700**



- 216 **Asprey - 18ct Gold Dress Watch**
Reference: 555.318
Serial: 38320
Year: Birmingham Import Marks dated 1974
Bezel: Rope-Texture
Case Material: 18ct Gold
Case Diameter: Approximately 21mm x 24mm
Dial: Gold-Tone, Brushed, Leaf Hands
Numerals: Black Roman Numerals
Crown: Blue Cabochon, Fluted
Movement: Baume & Mercier Calibre BM 775 17-Jewel Manual Wind Movement
Strap: After-Market Black Leather Strap
Inner Circumference: Approximately 16.0cm - 20.0cm
Buckle: After-Market Gold-Plated Buckle
Box: Yes
Papers: No
Gross Weight: 21.3 grams **£600-800**



Fine Jewellery, Watches & Silver, 21st May, 2026 09:30

- 217 **Chopard - Imperiale**
Reference: 8563
Serial: 4009998
Bezel: Diamond-Set
Case Material: Stainless Steel
Case Diameter: Approximately 28mm
Dial: Silvered, Luminous Hands
Numerals: Roman and Baton, Minute Track
Crown: Gem-Set
Movement: Chopard Calibre 09.01-C 27-Jewel Automatic Movement
Strap: Bi-Metal Bracelet
Inner Circumference: Approximately 15.0cm
Buckle: Signed Double Fold-Over Clasp
Box: No
Papers: No
Gross Weight: 63.3 grams **£600-800**



- 218 **Rolex - Oyster Perpetual**
Reference: 6620 (Case Back marked internally '6619')
Serial: 940176
Year: circa 1963
Bezel: Crosshatch Texture
Case Material: Yellow Metal marked '18K'
Case Diameter: Approximately 24mm
Dial: Gold-Tone, Sunburst, Luminous Dauphine Hands
Numerals: Baton, Minute Track
Crown: Rolex Twinlock
Movement: Rolex Calibre 1130 26-Jewel Automatic Movement, Adjusted to Five Positions and Temperature, numbered '33172'
Strap: Yellow Metal Brick-Link Bracelet, with Crosshatch Texture
Inner Circumference: Approximately 16.5cm
Buckle: Signed Yellow Metal Fold-Over Clasp, stamped '750'
Box: No
Papers: No
Gross Weight: 51.7 grams



For your protection, every watch with an estimate over £1,500 is checked against the Watch Register. This is an independent company who hold the world's largest, most established, international database of lost, stolen, and fake watches, containing data compiled over 35 years - providing Dawsons' buyers with complete peace of mind. **£2,500-3,500**

Fine Jewellery, Watches & Silver, 21st May, 2026 09:30

219

Rolex - Oyster Perpetual Date

Reference: 6527

Serial: 2573490

Year: circa 1970

Bezel: Bark-Texture

Case Material: Yellow Metal marked '18K'

Case Diameter: Approximately 24mm

Dial: Silvered, Sunburst, Baton Hands

Numerals: Baton, Rolex Coronet at twelve o'clock, Minute Track

Crown: Rolex Twinlock Crown

Movement: Rolex Calibre 1161 25-Jewel Automatic Movement, Adjusted to Five Positions & Temperature, numbered '15307'

Complication: Date Aperture with Cyclops Magnifier (worn) at three o'clock

Strap: Yellow Metal Bracelet

Inner Circumference: Approximately 15.5cm

Buckle: Signed, Yellow Metal Fold-Over Clasp, marked '750' and '8153'

Box: Yes

Papers: No

Gross Weight: 54.3 grams

For your protection, every watch with an estimate over £1,500 is checked against the Watch Register. This is an independent company who hold the world's largest, most established, international database of lost, stolen, and fake watches, containing data compiled over 35 years - providing Dawsons' buyers with complete peace of mind. **£3,000-5,000**



220

Tissot - 18ct Gold Dress Watch

Reference: H782.330

Serial: 3299423

Year: Purchased February 1998

Bezel: Smooth

Case Material: 18ct Gold

Case Diameter: Approximately 23mm

Dial: White, Mother of Pearl Chapter Ring, Syringe Hands

Numerals: Baton at twelve, three, six and nine o'clock

Crown: Signed

Movement: ETA Calibre 967.001 Six-Jewel Quartz Movement

Strap: Yellow Metal Fancy-Link Strap

Inner Circumference: Approximately 17.5cm

Buckle: Signed, Yellow Metal Fold-Over Clasp, marked '750'

Box: Yes

Papers: Guarantee Booklet and Quartz Watch Booklet Only.

Gross Weight: 36.8 grams

For your protection, every watch with an estimate over £1,500 is checked against the Watch Register. This is an independent company who hold the world's largest, most established, international database of lost, stolen, and fake watches, containing data compiled over 35 years - providing Dawsons' buyers with complete peace of mind. **£2,000-3,000**



Fine Jewellery, Watches & Silver, 21st May, 2026 09:30

- 221 **Omega - Seamaster Aqua Terra**
Serial: 86612385 (To Movement)
Bezel: Diamond-Set
Case Material: Stainless Steel
Case Diameter: Approximately 34mm
Dial: Mother of Pearl, Luminous Arrow Hands
Numerals: Gem-Set
Crown: Signed, Fluted
Movement: Omega Calibre 8520 28-Jewel Automatic Movement, numbered '86612385'
Complication: Date Aperture at six o'clock
Strap: Stainless Steel Bracelet
Inner Circumference: Approximately 17.0cm
Buckle: Signed, Stainless Steel Push Button Deployment Double Clasp, marked 'STZ001841'
Box: No
Papers: No
Gross Weight: 105.4 grams **£600-800**



- 222 **Omega - De Ville Automatic**
Bezel: Smooth
Case Material: Surface Testing as 9ct
Case Diameter: Approximately 35mm
Dial: Silvered, Brushed, Black Pointed Baton Hands
Numerals: Baton, Minute Track
Crown: Signed, Fluted
Movement: Automatic
Complication: Date Aperture at three o'clock
Strap: Integral Textured Brick-Link Strap
Inner Circumference: Approximately 18.0cm - 18.5cm
Buckle: 9ct Gold Fold-Over Clasp
Box: No
Papers: No
Gross Weight: 69.1 grams
 Please note this watch has not been opened. The movement has not been checked and therefore cannot be guaranteed.
 Please note: Unless otherwise stated, lots have been tested using an electronic tester. This is a surface test only and is not a guarantee of metal purity. **£1,000-1,500**



Fine Jewellery, Watches & Silver, 21st May, 2026 09:30

223

Bulgari - Octo Finissimo

Reference: 103297 (BGO 40 S XT)

Serial: BU1NJXL

Year: Purchased May 2022 (Under Warranty until 05/03/2027)

Bezel: Smooth, Brushed Finish

Case Material: Stainless Steel, Exhibition Case Back

Case Diameter: Approximately 40mm

Dial: Black, Skeleton Dauphine Hands

Numerals: Arabic at twelve & six o'clock, Baton

Movement: Bulgari Calibre BVL 138 36-Jewel Automatic Movement

Complication: Seconds Subsidiary Dial at seven o'clock

Strap: Stainless Steel Bracelet

Inner Circumference: Approximately 17.0cm

Buckle: Signed, Stainless Steel Double Fold-Over Clasp

Box: Yes. Inner & Outer.

Papers: Bulgari International Warranty & Authenticity Certificate, Extended Warranty Confirmation Letter (and copy), LVMH Return Without Repair Invoice & Two Copies of Warranty Activation Confirmation Only.

Gross Weight: 101.4 grams

For your protection, every watch with an estimate over £1,500 is checked against the Watch Register. This is an independent company who hold the world's largest, most established, international database of lost, stolen, and fake watches, containing data compiled over 35 years - providing Dawsons' buyers with complete peace of mind. **£3,500-5,500**



224

Cartier - Santos Automatique

Reference: 0901

Serial: 01857

Bezel: Smooth, Screw Detail

Case Material: Stainless Steel

Case Diameter: Approximately 23mm x 23mm

Dial: White, Blued Sword Hands

Numerals: Black Roman Numerals, Minute Track

Crown: Blue Faceted Stone

Movement: Automatic

Strap: Stainless Steel Bracelet with Screw Detail

Inner Circumference: Approximately 17.5cm

Buckle: Signed, Stainless Steel Fold-Over Clasp

Box: No

Papers: No

Gross Weight: 58.3 grams

Please note this watch has not been opened. The movement has not been checked and therefore cannot be guaranteed. For your protection, every watch with an estimate over £1,500 is checked against the Watch Register. This is an independent company who hold the world's largest, most established, international database of lost, stolen, and fake watches, containing data compiled over 35 years - providing Dawsons' buyers with complete peace of mind. **£2,000-3,000**



Fine Jewellery, Watches & Silver, 21st May, 2026 09:30

- 225 **Cartier - Santos de Cartier Galbée (Large Model)**
Reference: 1566 (W20011C4)
Serial: 386038 CE
Bezel: Smooth, Bi-Metal, Screw Detail
Case Material: Stainless Steel
Case Diameter: Approximately 28mm x 28mm
Dial: Cream, Signed at seven o'clock, Blued Sword Hands
Numerals: Black Roman Numerals, Minute Track
Crown: Faceted Blue Stone
Movement: Cartier Calibre 687 Seven-Jewel Quartz Movement



Complication: Date Aperture at six o'clock
Strap: Stainless Steel Bracelet with Yellow Metal Screw Detail
Inner Circumference: Approximately 16.0cm
Buckle: Signed, Stainless Steel Double Fold-Over Clasp
Box: No. Travel Pouch Only.
Papers: No.

Gross Weight: 87.2 grams
 For your protection, every watch with an estimate over £1,500 is checked against the Watch Register. This is an independent company who hold the world's largest, most established, international database of lost, stolen, and fake watches, containing data compiled over 35 years - providing Dawsons' buyers with complete peace of mind. **£2,500-3,500**

- 226 **Cartier - Tank Francaise (Medium Model)**
Reference: 2465
Serial: 479120CE
Year: Purchased 2004
Bezel: Smooth
Case Material: Stainless Steel
Case Diameter: Approximately 24mm x 20mm
Dial: White, Signed at seven o'clock, Blued Sword Hands
Numerals: Roman, Minute Track
Crown: Blue Cabochon
Movement: Cartier Calibre 175N Eight-Jewel Quartz Movement



Complication: Date Aperture at three o'clock
Strap: Bi-Metal Bracelet marked 'UFJC'
Inner Circumference: Approximately 16.0cm
Buckle: Signed, Stainless Steel Double Fold-Over Clasp
Box: No. Travel Pouch Only.
Papers: No

Gross Weight: 83.3 grams
 For your protection, every watch with an estimate over £1,500 is checked against the Watch Register. This is an independent company who hold the world's largest, most established, international database of lost, stolen, and fake watches, containing data compiled over 35 years - providing Dawsons' buyers with complete peace of mind. **£2,500-3,500**

Fine Jewellery, Watches & Silver, 21st May, 2026 09:30

227

Cartier - Roadster (Large Model)

Reference: 2510

Serial: 243437CE

Year: Purchased March 2006

Bezel: Smooth

Case Material: Stainless Steel

Case Diameter: Approximately 35mm x 34mm, Tonneau Shaped

Dial: Black, Signed at seven o'clock, Luminous Sword Hands

Numerals: Roman, Minute Track

Crown: Fluted

Movement: Cartier Calibre 3110 (ETA Calibre 2892A2) 21-Jewel Automatic Movement

Complication: Date Aperture with Magnifier at three o'clock

Strap: Stainless Steel Bracelet

Inner Circumference: Approximately 20.0cm

Buckle: Signed, Stainless Steel Double Fold-Over Clasp

Box: Box and Travel Pouch

Papers: Certificate and Service Booklet, Roadster Instructions Booklet, Care Guide Booklet and Original Purchase Receipt Only. Accompanied by Cartier Watch Catalogue.

Gross Weight: Approximately 142.0 grams

For your protection, every watch with an estimate over £1,500 is checked against the Watch Register. This is an independent company who hold the world's largest, most established, international database of lost, stolen, and fake watches, containing data compiled over 35 years - providing Dawsons' buyers with complete peace of mind. **£1,500-2,500**



228

Cartier - Must Tank Vermeil

Reference: 590005

Serial: 129604

Bezel: Smooth

Case Material: Gold-Plated Silver

Case Diameter: Approximately 22mm x 22mm

Dial: White, Tri-Colour Segmented, Blued Sword Hands

Numerals: Roman at twelve and six o'clock

Crown: Blue Cabochon

Movement: Cartier Calibre 690 Eight-Jewel Quartz Movement

Strap: Signed, Red Leather Strap

Inner Circumference: Approximately 14.0cm (Adjustable)

Buckle: Signed, Fold Over Clasp

Box: No. Travel Pouch Only.

Papers: No

Gross Weight: 30.4 grams **£600-800**



Fine Jewellery, Watches & Silver, 21st May, 2026 09:30

229 **Cartier - Tank Must**
Reference: 2413
Serial: 128668PL
Bezel: Smooth
Case Material: Gold-Plated '925'
Case Diameter: Approximately 25mm
Dial: Cream, Blued Sword Hands, Signed at seven o'clock
Numerals: Black Roman Numerals, Minute Track
Crown: Blue Cabochon
Movement: Cartier Calibre 687 7-Jewel Quartz Movement
Complication: Date Aperture at three o'clock
Strap: Signed Brown Leather Strap
Inner Circumference: Approximately 16.0cm
Buckle: Signed, Gold-Plated Fold-Over Clasp
Box: No
Papers: No
Gross Weight: 39.3 grams **£400-600**



230 **Baume & Mercier - Hampton**
Reference: 65488
Serial: 3853310
Bezel: Smooth
Case Material: Stainless Steel
Case Diameter: Approximately 22mm x 20mm
Dial: Silvered, Scalloped Sunburst
Numerals: Arabic at twelve, three and nine o'clock, Baton
Crown: Smooth, Oval, Diamond-Set
Movement: Baume & Mercier Calibre 7425 (ETA Calibre 956.112) Seven-Jewel Quartz Movement
Complication: Date Aperture at six o'clock
Strap: Signed, Yellow Leather-Effect Strap
Inner Circumference: Approximately 15.0cm - 18.5cm
Buckle: Signed Stainless Steel Buckle
Box: No
Papers: No
Gross Weight: 24.6 grams **£300-500**



231 **Sarcar - '18K' Dress Watch**
Reference: S 655
Serial: 41656
Bezel: Smooth
Case Material: Yellow Metal marked '18K'
Case Diameter: Approximately 32mm
Dial: Silvered, Pointed Baton Hands
Numerals: Baton
Crown: Fluted
Movement: Villeret Jewelled Manual Wind Movement
Strap: After-Market Brown Leather Strap
Inner Circumference: Approximately 16.5cm - 20.5cm
Buckle: After-Market Gold-Plated Buckle
Box: No
Papers: No
Gross Weight: 25.0 grams **£400-600**



Fine Jewellery, Watches & Silver, 21st May, 2026 09:30

- 232 **Omega - Seamaster De Ville**
Bezel: Smooth
Case Material: Stainless Steel
Case Diameter: Approximately 22mm
Dial: Silvered, Sunburst, Pointed Baton Hands
Numerals: Baton
Crown: Signed, Fluted
Movement: Manual Wind
Strap: After-Market Blue Leather Strap
Inner Circumference: Approximately 14.75cm - 18.0cm
Buckle: After-Market Chrome-Plated Buckle
Box: No
Papers: No
Gross Weight: Approximately 14.0 grams
 Please note this watch has not been opened. The movement has not been checked and therefore cannot be guaranteed.
£300-500



- 233 **Jaeger-LeCoultre - Stainless Steel Dress Watch**
Serial: 995163
Bezel: Smooth
Case Material: Stainless Steel
Case Diameter: Approximately 35mm
Dial: Silvered, Sunburst, Luminous Dauphine Hands
Numerals: Baton, Minute Track
Crown: Signed, Fluted
Movement: Automatic
Complication: Date Aperture at three o'clock
Strap: After-Market Black Leather Strap
Inner Circumference: Approximately 16.5 - 21.0cm
Buckle: After-Market Buckle
Box: No
Papers: No
Gross Weight: 36.7 grams
 Please note this watch has not been opened. The movement has not been checked and therefore cannot be guaranteed.
£300-500



- 234 **Jaeger-LeCoultre - Dress Watch**
Reference: 472918
Serial: 614787 (To Movement)
Bezel: Smooth
Case Material: Stainless Steel
Case Diameter: Approximately 30mm
Dial: Cream, Pointed Baton Hands
Numerals: Arabic, Minute Track
Crown: Fluted
Movement: Jaeger-LeCoultre Calibre P480 Jewelled Manual Wind Movement, numbered '614787'
Complication: Seconds Subsidiary Dial at six o'clock
Strap: After-Market Brown Leather
Inner Circumference: Approximately 16.5cm - 21.0cm
Buckle: After-Market Chrome-Plated Buckle
Box: No
Papers: No
Gross Weight: Approximately 27.5 grams **£300-500**



Fine Jewellery, Watches & Silver, 21st May, 2026 09:30

235 **Longines - 9ct Gold Flagship Automatic**
Reference: 3418
Serial: 13544966 (To Movement)
Year: London Import Marks for 1965
Bezel: Smooth
Case Material: 9ct Gold
Case Diameter: Approximately 35mm
Dial: Silvered, Brushed. Pointed Baton Hands
Numerals: Baton, Minute Track
Crown: Signed, Fluted
Movement: Longines Calibre 345 17-Jewel Automatic Movement, numbered '13544966'
Complication: Date Aperture at three o'clock
Strap: After-Market Black Leather Strap
Inner Circumference: Approximately 16.0cm - 20.5cm
Buckle: After-Market Gold-Plated Buckle
Box: No
Papers: No
Gross Weight: 44.8 grams **£800-1,200**



236 **IWC Schaffhausen - '18K' Dress Watch**
Reference: 817A
Serial: 1789318
Year: circa 1978
Bezel: Smooth
Case Material: Yellow Metal stamped '18K'
Case Diameter: Approximately 35mm
Dial: Silvered, Sunburst, Pointed Baton Hands
Numerals: Baton, Minute Track
Crown: Signed, Fluted
Movement: IWC Calibre 8541B 25-Jewel Automatic Movement, numbered '2086418'
Complication: Date Aperture at three o'clock
Strap: Signed Black Leather Strap
Inner Circumference: Approximately 17.0cm - 20.5cm
Buckle: Signed Gold-Plated Buckle
Box: No
Papers: No
Gross Weight: Approximately 53.0 grams
 For your protection, every watch with an estimate over £1,500 is checked against the Watch Register. This is an independent company who hold the world's largest, most established, international database of lost, stolen, and fake watches, containing data compiled over 35 years - providing Dawsons' buyers with complete peace of mind. **£1,500-2,000**



Fine Jewellery, Watches & Silver, 21st May, 2026 09:30

237

Omega - Ranchero

Reference: 2996.61.SC

Serial: 18703883 (To Movement)

Year: circa 1960

Bezel: Smooth

Case Material: Stainless Steel

Case Diameter: Approximately 36mm

Dial: Black, Dauphine Hands

Numerals: Pointed Baton, Arabic at twelve, three, six and nine o'clock, Minute Track

Crown: Signed, Fluted

Movement: Omega Calibre 285 17-Jewel Manual Wind Movement, numbered '18703883'

Strap: After-Market

Inner Circumference: Approximately 16.5cm at smallest, 22.5cm at widest

Buckle: After-Market Buckle

Box: No

Papers: No

Gross Weight: 44.5 grams

For your protection, every watch with an estimate over £1,500 is checked against the Watch Register. This is an independent company who hold the world's largest, most established, international database of lost, stolen, and fake watches, containing data compiled over 35 years - providing Dawsons' buyers with complete peace of mind. **£2,000-3,000**



238

Omega - Constellation

Reference: 168.005

Serial: 20721849 (To Movement)

Bezel: Smooth

Case Material: Gold-Plated Stainless Steel

Case Diameter: Approximately 34mm

Dial: Silvered, Brushed, Dauphine Hands

Numerals: Baton, Minute Track

Crown: Signed

Movement: Omega Calibre 561 24-Jewel Automatic Movement, Adjusted to Five Positions and Temperature, numbered '20721849'

Complication: Date Aperture at three o'clock

Strap: After-Market 9ct Gold Mesh Strap

Inner Circumference: Approximately 18.5cm

Buckle: After-Market 9ct Gold Fold-Over Clasp

Box: No

Papers: No

Gross Weight: 61.1 grams

This lot is being sold on behalf of Cancer Research UK, with all hammer proceeds going to charity. **£800-1,200**



Fine Jewellery, Watches & Silver, 21st May, 2026 09:30

- 239 **Lucien Picard - Dress Watch**
Reference: 48201
Bezel: Engraved-Detail
Case Material: Yellow Metal marked '14 carat'
Case Diameter: Approximately 25mm x 25mm
Dial: Gold-Tone, Brushed
Numerals: Baton
Crown: Fluted
Movement: Lucien Picard Calibre E36681 17-Jewel Manual Wind Movement
Strap: After-Market Black Leather Strap
Inner Circumference: Approximately 16.0cm - 20.0cm
Buckle: After-Market Chrome-Plated Buckle
Box: No
Papers: No
Gross Weight: 23.8 grams **£600-800**



- 240 **A 'Chronograph Suisse' '18K' Wristwatch**
Year: circa 1950
Bezel: Smooth
Case Material: Yellow Metal marked '18K'
Case Diameter: Approximately 36mm
Dial: Brushed, Telemeter to Edge of Dial
Numerals: Arabic, Minute Track
Crown: Fluted, Two Chronograph Pushers
Movement: Unsigned 17-Jewel Manual Wind Movement
Complication: Centre Flyback Seconds, 30-Minute Subsidiary Dial at three o'clock, Seconds Subsidiary Dial at nine o'clock
Strap: After-Market Leather Strap
Buckle: After-Market Gold-Plated Buckle
Box: No
Papers: No
Gross Weight: Approximately 40.3 grams
Please note: Unless otherwise stated, lots have been tested using an electronic tester. This is a surface test only and is not a guarantee of metal purity. **£600-800**



- 241 **Omega - Geneve Dynamic**
Bezel: Smooth
Case Material: Stainless Steel
Case Diameter: 30mm x 26mm
Dial: Blue, Silvered, Pointed Baton Hands
Numerals: Baton, Minute Track
Crown: Signed, Fluted
Movement: Automatic
Complication: Date Aperture at three o'clock
Strap: Stainless Steel Brick-Link Strap
Inner Circumference: Approximately 16.0cm
Buckle: Signed, Stainless Steel, Fold-Over Clasp, marked '5898/147'
Box: No
Papers: No
Gross Weight: 52.9 grams
Please note this watch has not been opened. The movement has not been checked and therefore cannot be guaranteed.
£200-300



Fine Jewellery, Watches & Silver, 21st May, 2026 09:30

242

Omega - Geneve Dynamic

Bezel: Smooth, Brushed Finish, Ovoid
Case Material: Stainless Steel
Case Diameter: Approximately 42mm x 36mm
Dial: Blue, Sunburst, Pointed Baton Hands
Numerals: Baton, Minute Track
Crown: Signed, Fluted
Movement: Automatic
Complication: Date Aperture at three o'clock
Strap: Stainless Steel Bracelet
Inner Circumference: Approximately 16.0cm
Buckle: Signed, Stainless Steel Fold-Over Clasp
Box: No
Papers: No
Gross Weight: 86.8 grams
 Please note this watch has not been opened. The movement has not been checked and therefore cannot be guaranteed.
£250-350



243

Omega - Speedmaster Skywalker X-33

Reference: 318.92.45.79.01.001
Serial: 92615947
Edition: 0695/2017
Bezel: Uni-Directional
Case Material: Titanium
Case Diameter: Approximately 45mm
Dial: Black, Luminous Pointed Baton Hands
Numerals: Luminous Baton, Minute Track
Crown: Signed
Movement: Omega Calibre 5620 Nine-Jewel Quartz Movement
Complication: Three Digital Apertures
Strap: Signed Fabric & Leather Strap
Inner Circumference: Approximately 18.0cm - 22.0cm
Buckle: Signed, Titanium, Push Button Fold-Over Clasp
Box: No
Papers: No
Gross Weight: Approximately 79.5 grams **£800-1,200**



Fine Jewellery, Watches & Silver, 21st May, 2026 09:30

- 244 **Omega - Speedmaster Automatic**
Bezel: Tachymetre
Case Material: Stainless Steel
Case Diameter: Approximately 38mm
Dial: Black, Luminous Pointed Baton Hands
Numerals: Luminous Baton, Minute Track
Crown: Signed, Fluted, Two Chronograph Pushers
Movement: Automatic
Complication: 30-Minute Subsidiary Dial at twelve o'clock, Day and Month Aperture at twelve o'clock, 12-Hour Subsidiary Dial at six o'clock, 24-Hour Subsidiary Dial at nine o'clock, Date to Edge of Dial indicated by Rocket Hand.
Strap: Stainless Steel Bracelet, marked '850'
Inner Circumference: Approximately 18.0cm
Buckle: Signed, Stainless Steel, Push Button Deployment Clasp, marked '1563/850'
Box: No
Papers: No
Gross Weight: Approximately 122.0 grams
 Please note this watch has not been opened. The movement has not been checked and therefore cannot be guaranteed.
£1,000-1,500



- 245 **Omega - Speedmaster**
Reference: 145.022-69 ST
Serial: 31613191 (To Movement)
Year: circa 1974
Bezel: Tachymetre
Case Material: Stainless Steel
Case Diameter: Approximately 42mm
Dial: Black, Luminous White Pointed Baton Hands
Numerals: Luminous Baton, Minute Track
Crown: Signed, Fluted, Two Chronograph Pushers
Movement: Omega Calibre 861 17-Jewel Manual Wind Movement, numbered '31613191'
Complication: 30-Minute Subsidiary Dial at three o'clock, 12-Hour Subsidiary Dial at six o'clock, Seconds Subsidiary Dial at nine o'clock
Strap: Stainless Steel Bracelet, numbered '640'
Inner Circumference: Approximately 18.0cm
Buckle: Signed Stainless Steel Fold-Over Clasp, numbered '1175'
Box: Yes
Papers: Yes. International Guarantee, Two 'You and Your Omega' Booklets Only.
Gross Weight: Approximately 106.0 grams
 For your protection, every watch with an estimate over £1,500 is checked against the Watch Register. This is an independent company who hold the world's largest, most established, international database of lost, stolen, and fake watches, containing data compiled over 35 years - providing Dawsons' buyers with complete peace of mind. **£2,500-3,500**



Fine Jewellery, Watches & Silver, 21st May, 2026 09:30

246

Breitling - Navitimer World

Reference: A24322

Serial: 2716195

Year: Purchased February 2013

Bezel: Uni-Directional

Case Material: Stainless Steel

Case Diameter: Approximately 45mm

Dial: White, Luminous Syringe Hands, Dual Time Zone Red Arrow Hand

Numerals: Baton, Minute Track

Crown: Signed, Fluted, Two Chronograph Pushers

Movement: Breitling (ETA Calibre 7754) 25-Jewel Automatic Movement, numbered '2716195'

Complication: 30-Minute Subsidiary Dial at twelve o'clock, 12-Hour Subsidiary Dial at six o'clock, Seconds Subsidiary Dial at nine o'clock, Centre Seconds, Date Aperture at three o'clock

Strap: Signed, Black Leather Strap

Inner Circumference: Approximately 19.0cm - 21.5cm

Buckle: Signed, Stainless Steel Buckle

Box: Yes

Papers: International Warranty Booklet, Slide Rules Instruction Booklet, Navitimer World Booklet & Chronometer Booklet Only.

Gross Weight: Approximately 134.5 grams **£1,000-2,000**



247

Rolex - Datejust 36

Reference: 16234 (Case Back marked 16200)

Serial: L798420

Bezel: Fluted

Case Material: Stainless Steel

Case Diameter: Approximately 36mm

Dial: Silvered, Sunburst

Numerals: Baton, Rolex Coronet at twelve o'clock, Minute Track

Crown: Rolex Twinlock

Movement: Rolex Calibre 3135 31-Jewel Automatic Movement, Adjusted to Five Positions and Temperature, Numbered '5447763'

Complication: Date Aperture with Cyclops Magnifier at three o'clock

Strap: Stainless Steel Jubilee Bracelet, marked '555B'

Inner Circumference: Approximately 17.5cm

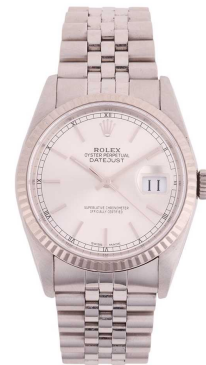
Buckle: Signed, Stainless Steel Fold-Over Clasp, marked '62510H'

Box: No

Papers: No

Gross Weight: 90.7 grams

For your protection, every watch with an estimate over £1,500 is checked against the Watch Register. This is an independent company who hold the world's largest, most established, international database of lost, stolen, and fake watches, containing data compiled over 35 years - providing Dawsons' buyers with complete peace of mind. **£2,000-3,000**



Fine Jewellery, Watches & Silver, 21st May, 2026 09:30

248

Rolex - Datejust 36

Reference: 16234

Serial: X140048

Bezel: Fluted

Case Material: Stainless Steel

Case Diameter: Approximately 36mm

Dial: Black, Rolex Coronet at twelve o'clock, Baton Hands

Numerals: Diamond-Set

Crown: Rolex Twinlock

Movement: Rolex Calibre 3135 31-Jewel Automatic Movement, Adjusted to Five Positions and Temperature, numbered '3 9990126'

Complication: Date Aperture with Cyclops Magnifier at three o'clock

Strap: Stainless Steel Jubilee Bracelet

Inner Circumference: Approximately 19.0cm

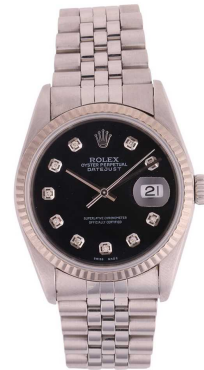
Buckle: Signed, Stainless Steel Fold-Over Clasp, marked '62510 H'

Box: Yes. Inner & Outer.

Papers: No. Accompanied by Rolex Swing Tag, Service Manual, Rolex Oyster Booklet, Oyster Perpetual Price List June 2011 & After-Market Purchase Receipt Only.

Gross Weight: 91.9 grams

For your protection, every watch with an estimate over £1,500 is checked against the Watch Register. This is an independent company who hold the world's largest, most established, international database of lost, stolen, and fake watches, containing data compiled over 35 years - providing Dawsons' buyers with complete peace of mind. **£2,000-3,000**



Fine Jewellery, Watches & Silver, 21st May, 2026 09:30

249

Ulysse Nardin - Michelangelo Triple Calendar

Reference: 331-41

Serial: 1288

Bezel: Smooth

Case Material: '18 carats gold', Exhibition Case Back

Case Diameter: Approximately 28mm x 34mm

Dial: Cream, Blued Hands, Three Mother of Pearl Subsidiary Dials and Moonphase Aperture

Numerals: Baton, Minute Track

Crown: Fluted

Movement: Ulysse Nardin Calibre ND10C 21-Jewel Manual Wind Movement, numbered '042720'

Complication: Date Subsidiary Dial at twelve o'clock, Month Subsidiary Dial at three o'clock, Moonphase Aperture and Lunar Cycle Subsidiary Dial at six o'clock, Day Subsidiary Dial at nine o'clock

Strap: After-Market Brown Alligator Leather Strap

Inner Circumference: Approximately 17.0cm - 20.0cm

Buckle: After-Market Gold-Plated Base Metal Buckle

Box: No. Pouch Only.

Papers: International Guarantee Card, Michelangelo Instruction Booklet. Additionally accompanied by a Chronoswiss Moonphase Booklet for 1987-1999.

Gross Weight: 61.2 grams

Please Note: This lot contains a restricted species and therefore may be subject to additional shipping restrictions or regulations. Buyers are solely responsible for adhering to all regulations regarding the import/export of this lot prior to bidding. Buyers must obtain all necessary licences at their own expense. Inability to import/export this lot, or seizure by a government agency, does not justify delayed payment or cancellation of sale.

For your protection, every watch with an estimate over £1,500 is checked against the Watch Register. This is an independent company who hold the world's largest, most established, international database of lost, stolen, and fake watches, containing data compiled over 35 years - providing Dawsons' buyers with complete peace of mind. **£5,000-7,000**



Fine Jewellery, Watches & Silver, 21st May, 2026 09:30

250

Patek Philippe - 18ct Gold Calatrava

Reference: 7119J/010

Serial: 4497592

Bezel: Clous de Paris Texture

Case Material: 18ct Yellow Gold, Exhibition Case Back

Case Diameter: Approximately 31mm

Dial: White, Black Leaf Hands

Numerals: Black Roman Numerals

Crown: Signed (Calatrava Cross), Fluted

Movement: Patek Philippe Calibre 215 18-Jewel Manual Wind Movement, adjusted to heat cold isochronism and five positions, numbered '5608967'

Complication: Seconds Subsidiary Dial at six o'clock

Strap: Yellow Metal Brick-Link Bracelet, numbered 'B692AAP'

Inner Circumference: Approximately 16.0cm

Buckle: Signed, 18ct Gold Double Fold-Over Clasp

Box: No

Papers: No. Accompanied by Mappin & Webb Purchase Receipt.

Gross Weight: Approximately 111.5 grams

For your protection, every watch with an estimate over £1,500 is checked against the Watch Register. This is an independent company who hold the world's largest, most established, international database of lost, stolen, and fake watches, containing data compiled over 35 years - providing Dawsons' buyers with complete peace of mind. **£10,000-12,000**



251

Waltham - 18ct Gold Open Face Pocket Watch

Reference: 406585

Serial: 26224740 (To Movement)

Year: Hallmarked 1928

Case Material: 18ct Yellow Gold

Case Diameter: Approximately 50mm

Dial: White, Blued Poire Hands

Numerals: Black Roman Numerals, Minute Track

Movement: Waltham 17-Jewel Keyless Wound Movement, numbered '26224740'

Complication: Seconds Subsidiary Dial at six o'clock

Box: No

Papers: No

Gross Weight: 102.6 grams **£2,000-3,000**



Fine Jewellery, Watches & Silver, 21st May, 2026 09:30

- 252 **An 18ct Full Hunter Poekct Watch, with later 9ct gold Bow Brooch**
Serial: 25010
Year: Hallmarked 1970
Case Material: 18ct Gold
Case Diameter: Approximately 38mm
Dial: White, Blued Poire Hands
Numerals: Black Roman Numerals, Minuet Track
Movement: Keyless Wound Movement, signed James Ballantyne & Sons, 52 Virginia Street and numbered '25010'
- Box:** No
Papers: No
Accompanied By: Later-Added 9ct Gold Bow Brooch Surmount



Gross Weight: 56.5 grams **£800-1,200**

- 253 **Waltham - 9ct Gold Open Face Pocket Watch**
Reference: 6038
Serial: 24134673 (To Movement)
Year: Hallmarked 1925
Case Material: 9ct Gold
Case Diameter: Approximately 50mm
Dial: White, Blued Poire Hands
Numerals: Roman, Minute Track
Movement: Waltham Keyless Wound Movement, numbered '24134673'
Complication: Seconds Subsidiary Dial at six o'clock
Box: No
Papers: No
Gross Weight: 84.7 grams
 This lot is being sold on behalf of Cancer Research UK, with all hammer proceeds going to charity. **£600-800**



- 254 **An Open Face Pocket Watch**
Reference: 53326
Case Material: Yellow Metal stamped '750'
Case Diameter: Approximately 30mm
Dial: White, Fleur-de-Lys Hands
Numerals: Black Roman Numerals, Minute Track
Movement: Keyless Wound Movement, Signed 'SUC'
Complication: Seconds Subsidiary Dial at six o'clock
Box: No
Papers: No
Accompanied By: Gold-Plated Curb-Link Chain
Gross Weight: 24.7 grams (Excluding Gold-Plated Chain) **£400-600**



Fine Jewellery, Watches & Silver, 21st May, 2026 09:30

- 255 A 9ct gold cigarette cutter, of hexagonal shape, with engine turned detailing, hallmarked 9ct gold, London 1968/69, measuring approximately 3.5 cm, with a pendant loop, weight 20.0 grams. **£300-500**



- 256 A two-tone cigarette case, of rectangular form with alternating horizontal stripes, hinged cover with an off-centred thumb-piece with a round sapphire cabochon, Polish assay marks for .750 fineness (1931-1963), 8.2 x 6.0 x 1.5 cm, 126.4 grams. **£4,000-6,000**



- 257 A 9ct gold cigarette case, the case externally decorated with engine-turned design, the hinged cover detailed with an engraved monogram 'CJ', with slide mechanism, measuring 12.8cm x 8.2cm x 0.9cm, 188.0 grams. **£4,500-6,500**



- 258 A cigarette case in 14ct gold, of reeded rectangular form, hinged cover with thumb-piece, bearing Russian marks for Faberge (no work master specified), London import marks, 10.0 x 7.5 x 1.5 cm, 163.2 grams. **£5,000-7,000**



- 259 A basket-weave cigarette case, of a curved rectangular form, the sides with Florentine finish and engraved with a geometric monogram, tapered and polished thumb-piece, yellow metal stamped '750', 9.3 x 8.0 x 1.8 cm, 175.9 grams. **£6,000-8,000**



- 260 Gerald Benney - a gem-set enamel box in 18ct gold, of oval form, the cover comprising a large carved and polished rutilated quartz, centred with a jade cabochon within a



Buyers Premium 27.5% + VAT. Fully illustrated catalogue at dawsonsauctions.co.uk.

Fine Jewellery, Watches & Silver, 21st May, 2026 09:30

sunburst surround, encircled with white enamel bands, the body with striped guilloché yellow enamel, opening to reveal an applied lion rampant with sword, bark-effect texture to interior and base, London assay marks 1974, mark AGB for Adrian Gerald Sallis Benney, housed in fitted case, 8.5 x 6.0 x 4.0 cm, 232.3 grams.

Gerald Benney was one of the most outstanding and influential British goldsmiths of the 20th century. During a career spanning more than 50 years, he was the first British craftsman to hold four Royal Warrants simultaneously. As well as designs in silver, in his early years Benney also used other materials to design a range of products including clocks, lamps and prams. His work can be seen in many collections worldwide, including those of the Victoria and Albert Museum and Goldsmiths' Company.

Born in Hull, Yorkshire in 1930. His mother, Aileen, was a talented silversmith and his father, Ernest, was Principal of Brighton College of Art. Young Gerald attended Brighton College of Art from 1946-1948, he studied design and craft under the tutelage of Dunstan Pruden. After two years National Service with the Royal Army Service Corps he went to the Royal College of Art to study under Professor Robert Goodden. He excelled and, in 1952, a four-piece tea service and tray secured him the Prince of Wales Scholarship.

It was at the RCA that Benney met fellow designers and silversmiths David Mellor and Robert Welch, between them they were to revolutionise Post-war silver design. During his last term at the RCA, Benney found his first workshop at Suffolk House, Whitfield Place off the Tottenham Court Road in London.

Early in his career Benney discovered, by accident, the distinctive surface texturing of silver that was to become his signature. He inadvertently used a hammer with a damaged head while producing a cup and liked the effect. This surface texturing soon became known as 'Benney Bark Finish'. The finish was widely imitated and dominated contemporary silver design for almost two decades. Its success was, not only, for its new contemporary look but, also for the practical reasons that it almost eliminated tarnish and fingerprints.

In 1963, Benney moved to Beenham House near Reading and it was here that he decided to develop the use of enamel to further embellish his silver objects and designs. He realised that he would need to learn the skills from established artisans. His first steps, in 1968, were to travel to Zurich to find an enameller who worked for the house of Burch Korrodi. By chance, he came across the Norwegian Berger Bergensen who, not only continued to practise the art of enamelling for Burch but had also worked for Karl Fabergé's great rival Bolin. Bergensen was persuaded to come to Britain and instruct the Benney workforce all he knew about enamelling: Alan Evans and Robert Winter became the most notable master enamellers for Benney.



Fine Jewellery, Watches & Silver, 21st May, 2026 09:30

Though it took several years to master the craft, the Benney studio refined and mastered the art of enamelling to the extent that they were able to decorate larger surface areas than Fabergé. There is little doubt that they went on to be one of the world's foremost modern enamellers.

In 1969, Benney moved his London studio to Falcon Wharf, Bankside where he eventually employed 22 people. Four years later, he moved his workshop to warehouses in Bear Lane, Southwark and, in the same year, The Goldsmith's Hall held a major retrospective of his work.

A year later, 1974, Benney received his first Royal Warrant from by Her Majesty The Queen, followed a year later by those of her late Majesty, Queen Elizabeth, The Queen Mother and His Royal Highness The Duke of Edinburgh. In 1980, Benney received an unprecedented fourth Royal Warrant from His Royal Highness The Prince of Wales.

It is interesting to note that besides running his own silver studio, Benney held several other design posts, between 1957 - 69 he worked as a consultant designer for Viners. He worked on domestic pieces for production in silver, pewter and stainless steel. Particularly successful were his designs for flatware and cutlery in stainless steel. In 1971, he was awarded Royal Designer for Industry and, from 1974 to 1983, he was Professor of Silversmithing and Jewellery at his alma mater, the Royal College of Art.

In 1993, together with his son Simon, Benny opened a shop at 73 Walton Street, Knightsbridge, London and two years later was awarded a CBE. **£8,000-12,000**

- 261 Gerald Benney - three 18ct gold goblets and dedication stand; the goblets forged with bark-effect texture and a polished rim, 7.5 x 7.0 cm, total weight 663.0 grams; along with a gilt stand engraved with the following "This lonely space remains where once a gold decanter stood, Summoned by Mr. Edward Heath making peace with France for good, It was taken one night to No.10 and from there to the Elysee, Where it was received as a gift no less by the President of the day.", 13.0 cm wide. (4) **£25,000-35,000**



- 262 Gerald Benney - a silver water jug, of baluster form with bark-effect texture all over, with a polished rim, spout and handle, London 1973, gilt interior, 25.55 cm high, 1352.5 grams (43.48 ozt). **£2,000-3,000**



Fine Jewellery, Watches & Silver, 21st May, 2026 09:30

- 263 Gerald Benney - A silver decanter, of tapering form with everted rim, bark-effect texture to the lower half, gilt interior, stopper missing, London 1973, 25.0 cm high, 604.0 grams (19.41 ozt). **£1,000-1,500**



- 264 Gerald Benney - a silver and enamel goblet, the bell-shaped bowl with red guilloché enamel over a textured ground, with cream enamel stem and circular spreading base, London assay marks 1974, mark AGB for Adrian Gerald Sallis Benney, 15.2 cm high, 305.4 grams. **£700-1,000**



- 265 A Georg Jensen 'Continental/Antik' pattern silver canteen for eight, London 2004-2010; to include two serving spoons, a pair of salad servers, eight dessert spoons, eight tablespoons, eight oval bowl soup spoons, eight table knives with stainless steel blades, eight dessert knives with stainless steel blades, eight table forks, eight fish forks and eight dessert forks; Total weighable: 2662.5 grams (85.60ozt). **£5,000-7,000**



- 266 Tiffany & Co - A canteen for twelve, marked 'Sterling', to include: two serving forks, two serving spoons, twelve table forks, twelve table spoons, twelve table knives (not marked 'sterling'), twelve cake forks, twenty-four dessert spoons, twelve butter knives, eleven tea spoons, one bouillon spoon, one fruit knife (handle marked 'sterling'), and one cake knife (handle marked 'sterling'), all signed 'Tiffany & Co', together with a small group of unassociated silver plated items; total weighable: 128.8 ozt (4006.4 grams) **£5,000-7,000**



- 267 Tiffany & Co. - A set of twelve late 19th century Tiffany and Co. 'Floral' pattern demi-tasse spoons, each stem and terminal depicting a different flower, stamped 'T&Co stg', circa 1890; together with a silver book vinaigrette opening to reveal a central manual wind watch within the grille and accompanied by a stand, London 1983; and a limited edition silver pill box, circular with applied filigree work and single pearl to pull-off cover, numbered 102/250. London 1984, sponsor's mark BAH. Gross weight 181.5 grams, 5.83 ozt. **£300-500**



Fine Jewellery, Watches & Silver, 21st May, 2026 09:30

- 268 Tiffany & Co. - a 'sterling silver' wine taster with pierced and engraved handle, signature to the base, 18.0 cm long, 182.0 grams (5.85 ozt). **£200-300**



- 269 Asprey - a pair of silver Armada dishes, hallmarked for London 1991, signed Asprey, each measuring approximately 9.5 cm in diameter, 119.1 grams (2). With box. **£300-500**



- 270 A silver-mounted tortoiseshell jewellery casket, Birmingham 1916, by E S Barnsley & Co., comprising a hinged, panelled domed cover over rectangular case, silver frame with tapered thumb-piece, 16.0 x 8.0 x 6.5 cm. **£200-300**



- 271 A George II silver snuff box, circa 1730, of rectangular form with hinged cover depicting a classical scene, inset thumbpiece opening to reveal gilt interior, with tapered sides featuring reeded detail, measuring approximately 7.5cm x 5.8cm, with rubbed maker's marks; 79.2 grams. **£300-500**



- 272 A George III silver snuff box, by Peter and Ann Bateman, of oval form, the hinged cover and body decorated with floral and scroll detail engraving, with gilt interior, hallmarked London, 1797, measuring approximately 8.0cm x 5.5cm x 3.0cm; 101.3 grams. **£700-1,000**



Fine Jewellery, Watches & Silver, 21st May, 2026 09:30

- 273 An early 19th Century Continental (possibly French) gilt snuff box, of waisted rectangular form, the hinged cover with floral and scroll border and central cartouche, with inset thumbpiece, the base with embossed floral detail, measuring approximately 8.3cm x 4.9cm x 1.4mm, with rubbed marks; 77.2 grams. **£200-300**



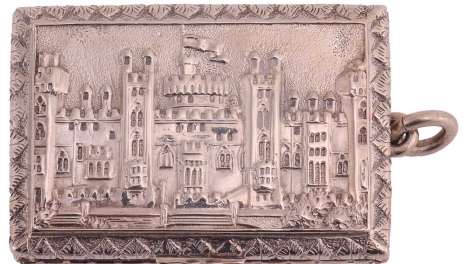
- 274 A George IV silver snuff box, by John Bettridge, of rectangular form with gilt interior, the hinged cover with embossed decoration depicting a classical scene with foliate borders on cover and base, with inset floral thumbpiece, engraved to the interior: 'To Mr Joseph Ripley, With The Kindest Regards, of C. & O. Saunders', measuring approximately 8.1cm x 5.2cm, hallmarked Birmingham, 1825; 173.9 grams. **£1,000-1,500**



- 275 A George IV silver snuff box, by John Bettridge, of rectangular form with gilt interior, the hinged cover with embossed decoration depicting a classical battle scene, with foliate borders on cover and base, measuring approximately 8.5cm x 6cm, hallmarked Birmingham, 1829; 184.5 grams. **£1,000-1,500**



- 276 A Victorian silver castle top vinaigrette, by Gervase Wheeler, Birmingham 1839, of rectangular form with hinged cover depicting Windsor Castle, foliate borders to cover and base, with thumbpiece and attached jump ring, opening to reveal a gilt interior and pierced foliate grille, measuring approximately 4.5cm x 3.0cm; 29.4 grams. **£400-600**



- 277 A Victorian silver gilt snuff box, by James Creswick, of cartouche form, the hinged cover with embossed design depicting a tavern scene, with gilt interior, hallmarked Sheffield, 1847, engraved to the base: 'James Creswick, Crookes Moor, Sheffield'; measuring approximately 8.8cm x 7.2cm x 1.8cm, 172.3 grams. **£1,200-1,800**



Fine Jewellery, Watches & Silver, 21st May, 2026 09:30

- 278 A Charles II lace back, rattail, with scroll decoration to terminal and scratch initials to terminal B over T B to reverse of terminal, London 1683 by Lawrence Cole, 20cm; together with another similar, London 1693 by Lawrence Cole, 18.8cm. Gross weight 94.6 grams, 3.04ozt. **£300-400**



- 279 A Charles II trefid lace back, rattail spoon, with scroll decoration to terminal, London 1685 by Thomas Allen IV, 20cm length, 50 grams, 1.6 ozt **£200-300**



- 280 A pair of James II silver lace-back trefid spoons, the reverse of the bowl with a rat-tail and scroll decoration, the terminal with foliate scroll decoration, the reverse of the terminal with engraved armorial, London 1686, by Thomas Issod, 19.8cm, length; total approx weight 106.8 grams, 3.43 ozt. **£600-800**



- 281 A pair of James II silver lace-back trefid spoons, the reverse of the bowl with a rat-tail and scroll decoration, the terminal with foliate scroll decoration, the reverse of the terminal with scratch initials 'H' over 'R.E.', London 1686, by Thomas Issod, 19.8cm, length; total approx. weight 104.9 grams, 3.37ozt. **£600-800**



- 282 A fine William and Mary silver gilt trefid spoon, the bowl with rat-tail and foliate engraving to each side, the stem and terminal with scroll and foliate engraving to both sides, the terminals with vacant oval cartouches, by John Clifton - circa 1685. 20cm length; 53.2 grams, 1.71 ozt. **£1,000-1,500**



Fine Jewellery, Watches & Silver, 21st May, 2026 09:30

- 283 A fine William and Mary silver gilt trefid spoon, the bowl with rat-tail and foliate engraving to each side, the stem and terminal with scroll and foliate engraving to both sides, the terminals with oval cartouches, the reverse initialled 'S.S'. London 1691 by Thomas Issod. 20cm length, 45.2 grams, 1.45 ozt.
In early, by not contemporaneous case.
Original gilding
£2,000-3,000



- 284 A pair of Queen Anne silver rat tail spoons, Edinburgh 1709 by Robert Bruce, assay master Edward Penman, back of the finials engraved with commemorative inscription "Mary Hay Lady Randerstone elder 1710", 20.0 cm in length, 157.5 grams (5.06 ozt).



The pair of casters by the same maker; please see Bonhams Lot 211 from 'The Scottish Sale' dated 16th April 2014. They quoted the larger caster from the set, which has the same engravings "Mary Hay Lady Randerstone elder 1710", had previously been sold at Christie's and Edmiston's of Lot 95, from 'The Shaw Collection of Important Scottish Silver', Glasgow, 29th March 1983, and is now held in the collections of the National Museums of Scotland. **£250-350**

- 285 A Queen Anne Britannia standard dog nose spoon, scratch engraved to reverse of the terminal T.G. London 1705 by John Ladyman. 20.5cm length; 63.4 grams, 2.03 ozt
£200-300



- 286 A Queen Anne Britannia standard trefid spoon, plain terminal with scratch engraved initials A.R to reverse of the terminal, London 1703 by Lawrence Jones. 19.8cm length, 52.7 grams, 1.69 ozt
£200-300



Fine Jewellery, Watches & Silver, 21st May, 2026 09:30

- 287 A William and Mary lace back trefid spoon, scroll engraved terminal, the reverse with scratch initial A.B. London 1692, by William Mathew I, 18.8cm length, 34.3 grams, 1.1 ozt.
£150-250



- 288 A William and Mary, lace back rat tail spoon, the terminal with scroll decoration and the reverse of the terminal prick engraved initials, D.P over H.R.S and dated 1694. London 1693 by William Scarlett, 20.5 cm length 55.3grams , 1.77ozt.
£200-300



- 289 A William and Mary three-tine silver gilt trefid fork; scroll and foliate engraved decoration to both sides of the stem and terminal against a cross-hatched ground, vacant oval cartouches to the terminals. London 1693 (?) by Issac Dighton; 16.8cm length; 37.1 grams, 1.19ozt
£200-300



- 290 A William III trefid spoon, with beaded rat-tail and prick engraved initials T.D over three numbers with star burst design detail. London 1697, by Lawrence Cole, 20cm length, 58.16 grams, 1.88 ozt.
£150-250



- 291 An 18th-century French fiddle and thread straining spoon, and a straining ladle; the straining spoon with pierced scrolled foliates to the bowl, engraved with initials 'A.F', with crowned K indication of manufacture in the third quarter of the 18th century, and Paris discharge marks, 31.7 cm long; a similar straining ladle bearing the crowned N mark, 20.0 cm long; total weight of items 252.5 grams (8.11 ozt). (2)
£500-700



Fine Jewellery, Watches & Silver, 21st May, 2026 09:30

- 292 Four various early 18th century silver spoons; to include a pair of Queen Anne Hanoverian rat tail spoons, Britannia standard, London 1709 by Henry Greene, monogram engraved to the back of the finials, 20.3 cm long; a Queen Anne Hanoverian rat tail spoon, Britannia standard, London 1712 by George Cox, with later scratch engravings 'H over I.C, 1736' 20.3 cm long; and a George II Irish shell back spoon, Dublin 1759 by Daniel Popkins, finial engraved with crest and 'Dublin 1756', 21.5 cm; Total weight of items 245.0 grams (7.87 oz). (4)
£300-500



- 293 A pair of Queen Anne Irish silver Hanoverian rat tail spoons, Dublin 1708 by Thomas Bolton, terminals engraved with rooster crest to the reverse, 19.7 cm in length; together with a pair of George III silver spoons with Old English finials, Edinburgh 1789 by Patrick Robertson, finial engraved with initial 'B' to the reverse, 21.0 cm long; Total weight of items 275.5 grams (8.85 oz). (4) **£300-500**



- 294 A Queen Anne Britannia standard three tine dog nose fork, later crest engraved to reverse of terminal. London 1703 by John Broake. 19.3cm, 60 grams, 1.92 oz
£200-300



- 295 A Queen Anne Britannia standard two tine dog nose fork, Plain terminal with scratch engraved initials to reverse of the terminal, London 1702 by Lawrence Jones. 17.5cm length, 41 grams, 1.31oz
£200-300



- 296 A matched set of six George I three-tine dessert forks, Hanoverian pattern with crests and mottos engraved to terminals. One with a different motto, Edinburgh 1724, Assay master EP, maker's mark AE, unidentified. 5.5 oz, 172.9 grams
£400-600



Fine Jewellery, Watches & Silver, 21st May, 2026 09:30

- 297 A George I Britannia standard silver Hanoverian rat-tail basting spoon, Exeter 1719, crowned 'TR' in quatrefoil cartouche for George Trowbridge, back of the finial engraved with a boar (?) sejant armorial, 32.5 cm long, 164.0 grams (5.27 ozt). **£200-300**



- 298 A pair of George II Hanoverian pattern basting spoons; crests engraved to terminals, London 1756. 5.78ozt; 180 grams **£300-500**



- 299 A George II silver dog nose, rat tail spoon, with crest engraved to terminal (possibly later) maker's only F.E., with fleur-de-lis and crown above - circa 1730; together with four George II Hanoverian pattern dessert spoons, the terminals with crests engraved to terminals, London 1751 by James Tookey **£200-300**



- 300 A George III Old English pattern soup ladle, crest engraved to terminal, London 1788 by William Sumner; together with an Irish tablespoon, Old English pattern with crest engraved to terminal, Dublin 1776, maker's mark I.C recorded but not identified. Gross weight 7.25 ozt, 234 grams **£300-500**



- 301 A George III Scottish soup ladle; Old English pattern, with crest engraved to the terminal. Edinburgh 1790 by William Robertson. 37cm length, 5.9ozt, 184.7 grams. **£300-500**



Fine Jewellery, Watches & Silver, 21st May, 2026 09:30

- 302 A set of five 19th century Canadian silver fiddle pattern dessert forks by George Savage, circa 1840s, with engraved initial D to the finials, 17.5 cm in length, 198.1 grams (6.36 oz). (5)
£200-300



- 303 Paul Storr - A George III fiddle thread and shell pattern fish slice, with crest engraved to terminal, London 1800. 30cm length; 8.58ozt, 267.1 grams **£400-600**



- 304 A pair of George IV asparagus tongs, fiddle thread and shell pattern with scroll pierced blades. London 1825 by William Chawner. 238.5 grams, 7.66ozt. **£200-300**



- 305 A set of six Victorian single-struck Queen's pattern silver forks, Glasgow 1850, by William Clarke Shaw, 21.7 cm in length, 481.0 grams (15.46 oz). (6)
£400-600



- 306 A cased Victorian parcel gilt three-piece Christening set; fancy rose husk pattern, with monograms engraved to terminals, London 1862/63/64 by George Adams. Gross weight weighable 88.8 grams, 2.85ozt **£200-300**



Fine Jewellery, Watches & Silver, 21st May, 2026 09:30

- 307 A George I silver tobacco box, by Edward Cornock, London 1654, of oval form with ogee pull-off cover, on a stepped base, with later-engraved initials, 10.5 x 8.5 cm, 185.0 grams (5.94 ozt). **£300-500**



- 308 Two Continental chargers with a dubious coat of arms of Castile and Leon, Spain, embossed with a crown above a quartered crest of lion rampant and castle tower, with lions supporters, within a border of scrolled foliate motifs and gadroon edge, diameter 34.5cm; together with a similar round dish with relief profile portrait (each weighs approximately 13.5 ozt); and a large rectangular brass dish featuring repoussework of a Roman scene. (4)
(Qty: 4) **£800-1,200**



- 309 A pair of Queen Anne Britannia standard silver cast candlesticks, London 1713, by Richard Bayley, of octagonal 'diamond' form, with panelled columns and stepped knops, to conforming spread bases, 20.0 cm high, 869.0 grams (27.93 ozt). **£2,000-3,000**



- 310 A Queen Anne silver lidded tankard, London 1714 by Robert Timbrell & Joseph Bell, with a hinged ogee domed cover, scrolled thumbpiece, a reeded girdle and a moulded foot, handle engraved with initials, 18.0 cm high, 759.0 grams (24.4 ozt). **£1,000-1,500**



- 311 A George I Britannia standard silver tazza, London 1719, of plain circular form on a stepped pedestal foot, with applied moulded border, bearing maker's mark 'ED' in a shield (unidentified), 22.0 cm in diameter, 448.5 grams (14.41 ozt). **£1,000-1,500**



Fine Jewellery, Watches & Silver, 21st May, 2026 09:30

- 313 A pair of George I silver cast candlesticks, London 1725, maker's mark 'WL' in shield cartouche (unidentified), with stepped octagonal knops and bases, engraved with crest of talbot sejant under baron crown, 18.0 cm high, 826.5 grams. (26.57 ozt). Scratched weight marked to the base: 27.8, possibly missing sconces. **£2,000-3,000**



- 314 A George I silver salver, plain octofoil form, engraved with central armorial, raised on three bracket feet. Scratch weight to underside, 29.0cm diameter, London 1727 by Edward Cornock. 926.88 grams. (29.8ozt) **£2,000-3,000**



- 315 A George II silver creamer, London 1740 by Dinah Gamon, baluster form with shaped rim on three foliate feet; a George II silver sauceboat, London 1747 by Edward Wakelin, on three hoof feet with leaf-capped handle; and a French decanter of Neoclassical design, on circular pedestal and a swan handle, French assay mark for .950 silver; total weight of items 558.0 grams (17.94 ozt). (3) **£500-700**



- 316 A George II heavy-weight silver sauceboat, London 1737, by William Kidney, of fluted shell form with undulating rim, supported on a cast, stepped quatrefoil base, and scrolled handle with shell terminal, heron crested to the sides, 20.0 cm long, 14.5 cm high, 529.0 grams (17.00 ozt). **£500-700**



- 317 Two George II silver sauce boats; first by Richard Zouch, London 1741, with shaped rim, leaf-capped scroll handle, on three hoof feet and shell terminals; the other similar by James Morison, London 1755, shaped rim with leaf-capped flying handle, on three hoof feet; total weight of items 674.5 grams (21.68 ozt). (2) **£800-1,200**



Fine Jewellery, Watches & Silver, 21st May, 2026 09:30

- 318 A pair of George II silver cast candlesticks, London 1743, by James Gould, with fluted baluster knops, on stepped square bases, with spool-shaped sconces, 17.0 cm high, 823.5 grams (26.47 ozt). **£1,200-1,800**



- 319 A George III silver mug, by John Payne, London 1755, of baluster form with flared rim on stepped foot, S-scroll handle, hallmarks to base, 9.5 cm high, 210.5 grams (6.75 ozt). **£300-500**



- 320 A pair of George II silver cast candlesticks, by Simon le Sage, London 1755, of floral scrollwork design, baluster columns leading to shaped bases, cartouche engraved with a crowned eagle close crest, detachable sconces, 30.0 cm high, 2360.0 grams (75.87 ozt). **£4,000-6,000**



- 321 A George III silver coffee pot, by John Swift, London 1764, of baluster form with hinged domed cover and urn finial, acanthus leaf capped spout and a treen scroll handle, on a flared foot, hallmarks and scratch weight 28.10 to the base, 912.0 grams (29.32 ozt). **£900-1,100**



- 322 A George III silver sugar caster, possibly by John Delmester (unregistered mark ID), London 1764, of baluster form with reeded girdle supported on flared base, urn-shaped finial and gilt interior, 14.0 cm high, 94.7 grams (3.04 ozt). **£150-250**



Fine Jewellery, Watches & Silver, 21st May, 2026 09:30

- 323 A George III silver-mounted wine coaster, London 1768, by Edward Lowe, of circular form with twisted rope edge and pierced body of quatrefoil patterns, cartouche engraved with lion rampant crest, 12.5 cm wide. **£200-300**



- 324 A pair of George III silver salt cellars, by Robert Hennell I, London 1772, of oval form with gadrooned border on four hoof feet with shell terminals, blue glass liners and unassociated pair of condiment spoons, total weighable 241.5 grams (7.76 ozt). (2) **£120-180**



- 325 A George III silver salver, London 1773, by Richard Rugg I (probably), of circular form with shaped border with gadrooned edge, on three hoof feet, engraved with scrolled monogram to the centre, 16.0 cm wide, 239.5 grams (7.70 ozt). **£250-350**



- 326 An Eighteenth century bachelor's teapot, possibly German or Dutch, of spirally lobed melon form, base in the form of floral and foliage spray, hinged cover similarly moulded as a floral motif, carved ivory scroll handle, body engraved with monogram, 17.0 cm wide, 307.7 grams (9.89 ozt). IVORY EXEMPTION CERTIFICATE NUMBER: YP6KXQ1W **£800-1,200**



- 327 A George III silver salver, London 1775, by Richard Rugg I, of shaped circular form, with beaded border, on three ball and claw feet, centrally engraved with coat of arms framed by a floral laureate surround, 21.0 cm in diameter, 428.5 grams (13.77 ozt). **£400-600**



Fine Jewellery, Watches & Silver, 21st May, 2026 09:30

- 328 A George III silver sugar urn, London 1777, maker's mark rubbed, of half fluted vase-shaped body and beaded border, stands on a spread pedestal foot, two flying scroll handles with acanthus leaf terminals, domed, pull-off cover with a fluted gadrooned finial, 19.0 cm high, 419.5 grams (13.48 ozt). **£400-600**



- 329 A George III silver teapot of oval cylindrical outline, London 1780 by Digby Scott and Benjamin Smith II, with fine beaded rim and beaded turned finial, tapered spout and treen handle, 27.5cm wide, (18.2 ozt), 566 grams. **£600-800**



- 330 A George III silver sugar basket, by Abraham Peterson & Peter Podio, London 1789, of fluted oval bowl raised on a shaped pedestal foot, fitted with reeded swing handle, gilt interior, decorated with bright-cut foliate bands, 17.0 cm wide, 217.0 grams (6.97 ozt). **£200-300**



- 331 A George III silver tea caddy, by Thomas Phipps & Edward Robinson, London 1793, of square form with bright cut border, flushed hinged cover with a cast flower finial, engraved with crowned monogram in an oval cartouche surrounded by bow and laurel foliate, hallmarks struck to the base, 10.3 x 7.5 x 9.0 cm, 424.0 grams (13.63 ozt). **£800-1,200**



- 332 A pair of George III silver salvers by John Crouch I & Thomas Hannam, London 1782, of circular shape with beaded border, on three ball and claw feet, 15.5 cm wide, total weight of items 390.5 grams (12.55 ozt). (2) **£800-1,200**



Fine Jewellery, Watches & Silver, 21st May, 2026 09:30

- 333 A George III silver teapot, London 1797 by Peter & Ann Bateman, of half fluted oval form, with ebonised scroll handle and finial to the hinged cover, initial engraved to one side, 28.0 cm long, 440.5 grams (14.16 oz). **£300-500**



- 334 A pair of George III silver wine coasters, London 1800 by William Frisbee, circular form with gadroon edge, pierced and engraved with scrolling floral patterns, wooden bases inset with ivory bosses, 13.0 cm wide. (2) IVORY EXEMPTION CERTIFICATE NUMBER: WDLSJ47X **£400-600**



- 335 A George III silver twin handled sugar basin, by Robert Hennel I & Samuel Hennel, London 1805, of shaped rectangular form with angular handles, decorated with bright-cut floral borders, monogrammed oval cartouches on the body, gilt interior, 19.0 cm wide, 304.3 grams (9.78 oz). **£200-300**



- 336 A George III silver bowl, by Thomas & Joseph Guest & Joseph Craddock, London 1806, of round half-fluted form, with beaded border, on circular ring foot, crested, 14.0 cm wide, 261.0 grams (8.39 oz). **£400-600**



- 337 A George III silver chamberstick, London 1816, by Solomon Hougham, with fluted knop and gadroon edges, leaf-capped handle, and detachable snuffer, 17.0 cm wide, 359.5 grams (11.55 oz). **£300-500**



Fine Jewellery, Watches & Silver, 21st May, 2026 09:30

- 338 A George III silver three-piece tea service, by William Bateman I, London 1821, comprising a teapot, a creamer and sugar bowl, of boat form with half reeded body and a floral border, the hinged cover of the teapot decorated with a rectangular floral finial with gadrooned edge, and an angular reeded handle with ivory insulators, leaf-capped spout, on four ball feet, 29.5 cm wide; cream and sugar in conforming design, gilt interior, and palmette-decorated handles; total weight of items 1236.0 grams. (39.73 ozt). IVORY EXEMPTION CERTIFICATE NUMBER: 7Z2HZCUZ **£1,200-1,800**



- 339 A pair of George III salts, boat-shaped with beaded borders and reeded lopp side handle, on oval pedestal bases and gilt interiors. Crests engraved to sides, London 1821 by John Wakelin & William Taylor. Full hallmarks on one and maker's mark only to the other. 140 grams, 4.5ozt. **£200-300**



- 340 A George III silver teapot and cream jug, by Rebecca Emes and John Barnard, London 1822, 1823, of squat circular form with reeded girdle, the teapot hinged cover with squat disc finial and turned ivory, C-scroll handle with ivory insulators, on ring foot, engraved with armorial, 26.5 cm long; the creamer of conforming design with gilt interior and a reeded feather capped handle, crested, 738.5 grams (23.74 ozt). (2) IVORY EXEMPTION CERTIFICATE NUMBER: 1TY6LEE5 **£700-900**



- 341 A pair of George II silver butter shells, of typical fluted form on two cast feet, shaped valves engraved with crowned crest of a wyvern, hallmarks and scratch weight underneath, 13.0 long, 274.0 grams (8.80 ozt). (2) **£300-500**



- 342 A large Austro-Hungarian teapot, of spiral fluted form with leaf border and a beaded edge, hinged cover with rose finial, scrolled handle with turned ivory insulators, on shell and scroll bracket feet, Austro-Hungarian silver mark for .800 fineness (1866-1937), 32.0 cm wide, 20.0 cm high, 1038.0 grams (33.37 ozt). IVORY EXEMPTION CERTIFICATE NUMBER: RYJVZQCL **£800-1,200**



Fine Jewellery, Watches & Silver, 21st May, 2026 09:30

- 343 A silver teapot of baluster shape, with carved treen scrolling handle and ball finial on the hinged cover, with floral engravings throughout and a vacant cartouche to the body, on a flared foot, base with let-in and now erased marks (The Goldsmiths' Hallmark Authentication Committee no.9651) and re-hallmarked with the London Assay Office hallmark for London 2026, 23.5 cm wide, 470.0 grams (15.11ozt). **£350-450**



- 344 A pair of George III silver twin-handled cups, London 1815 by Joseph Angell, with gilt interiors, the looped handles terminating in grapes and leaves, with fluted bellies on a circular base, each engraved 'The Gift of Friendship 1815', 17 cm high, 25 ozt. combined weight. (Qty: 2) **£700-1,000**



- 345 A George IV silver seal box, London 1827 by Rundell, Bridge & Rundell (John Bridge), of circular form, hinged cover embossed and chased with the Royal armorial, within a surround of oak leaf and acorns, open to reveal a detachable inner plate with presentation inscriptions of golf trophy winners, 17.5 cm wide, lined with wood and fitted on wooden stand mounted with vacant cartouches. **£1,500-2,500**



- 346 A Victorian silver teapot, by William Hunter, London 1844, of compressed octagonal form, with a hinged cover and base each of eight panels, chased with geometrical floral decorations, scrolled handle with ivory insulators, 29.0 cm wide, 738.0 grams (23.72 ozt). : IVORY EXEMPTION CERTIFICATE NUMBER: 8UBZ2F26 **£600-800**



- 347 A Victorian silver gilt ewer, London 1859 by Joseph Angell II, of ovoid form with shaped spout and scroll edge, hinged cover with bud finial, with scroll handle on stepped circular pedestal, engraved with arabesque pattern, height 30.5 cm, 599.0 grams (19.25 ozt). **£500-700**



Fine Jewellery, Watches & Silver, 21st May, 2026 09:30

- 348 A Victorian silver tapering cylindrical beaker, London 1877 by William & John Barnard, of plain form with applied pierced foliate scroll border to the foot, 12.3cm high, (7.1 ozt), 220 grams. **£200-300**



- 349 A Victorian silver mug, by Francis Boone Thomas, London 1888, of plain tapering cylinder form, C-scroll handle and gilt interior, signed to the base, 11.5 cm high, 299.0 grams (9.61 ozt). **£300-500**



- 350 Kate Harris for William Hutton & Sons - An Arts and Crafts silver trinket box, London 1900, of circular form, triangular cover with pierced corners and a flower motif embossed to centre, hinged clasp with copper rivets, stepped base, diameter 10.0cm, 202.5 grams. (6.51 ozt). **£800-1,200**



- 351 Albert Edward Jones - An Arts and Crafts silver tea caddy, Birmingham 1909, the planished cylindrical body with twisted rope border decorated with applied rosettes, domed cover with a floral finial, on a flared base, with a detachable lead weight interior panel, 159.5 grams weighable (5.12 ozt). **£300-500**



- 352 Georg Jensen - An Arts and Crafts (Skønvirke) condiment jar with silver cover, of circular form, cover topped with a stylised flowerhead finial, design number 486, stamped with 1915-32 maker's mark, London import marks for 1927, 9.0cm wide. **£300-500**



Fine Jewellery, Watches & Silver, 21st May, 2026 09:30

- 353 Emile Hugo of Rue Des Quatre-Fils, Paris - A Mid-19th Century fine sugar bowl and cover, of oval form, the domed cover with acanthus leaves and a perching bird finial, over intricate pierced sides and twin handles, monogram engraved on the oval raised cartouche, on four paw feet, fitted with a cobalt blue glass liner, 318.5 grams weighable (10.24 ozt). **£400-600**



- 354 A commemorative silver salver, Sheffield 1900 by Atkin Brothers, of circular form with applied shell and scroll border, supported on three bracket feet, modern inscription to the centre and base, 27.5 cm wide, 491.5 grams (15.80 ozt). In a fitted wooden case with single handle to side. **£600-800**



- 355 A pair of silver-collared cut glass decanters, and a Hanau repousse dish; the decanters of square form, flared silver collar bearing London hallmarks 1935, by Preece & Willicombe, with spherical stoppers; together with an early 20th century Hanau dish, by Georg Roth & Co., of shaped oval form, pierced with elaborated floral scrollwork and cornucopia to the border, two vacant cartouches on the sides, centrally embossed with a bucolic scene with cherubs, length 30.0cm, width 24.5cm, 441.6 grams (14.2 ozt). (2)
(Qty: 3) **£200-300**



- 356 A pair of Art Deco silver casters, by S W Smith & Co., Birmingham 1919, of octagonal form with stepped bases, 9.0 cm high, 179.5 grams (5.75ozt). **£200-300**



- 357 An American Sterling silver 'Executive Decision Maker' spinning top by Gorham, mid-20th century, with an egg shaped central finial and six lapet-shaped panels engraved, 'Sell High, Play Golf, Hire Assistant, Buy Low, Leave Early, Work', with ebony or dark composite base, stamped Gorham Sterling 50, 6.5cm diameter. **£100-150**



Fine Jewellery, Watches & Silver, 21st May, 2026 09:30

- 358 An Edwardian silver-mounted salad bowl and a pair of servers, by William Hutton & Sons Ltd., Birmingham 1902 & 1903; the moulded glass bowl with inverted silver rim, together with a pair of silver salad servers with matching moulded glass handles; bowl 23.0 cm in diameter, servers 27.0 cm long. **£200-300**



- 359 A George II silver twin-handled cup with later inscription, the bell-shaped bowl with flared rim and applied girdle, two scroll handles and raised on a stepped circular pedestal, with later engravings for a Golfing Prize, 16.0 cm high, 523.0 grams (16.81 ozt).
Housed together with a turned wooden stand in fitted case. **£800-1,200**



- 360 A large George II twin-handled cup and cover, Britannia standard silver, London 1728, maker's mark 'WI', decorated with applied cut-card work to the lower half and the dome cover, reeded girdle and urn-shaped finial, leaf-capped scroll handles, supported on a stepped circular foot, engraved with armorials to body and cover, Lion rampant debriused by a bend, under ducal crown, purported to be of the Abernethy family. Weight 2571.0 grams (82.8 ozt), height 33.0 cm, 28.0 cm across handles. **£3,500-4,500**



- 361 A Victorian silver trophy cup, in the form of a 17th century porringer, London 1887 by Walter & John Barnard, with a gadrooned girdle and half fluted belly, chased with foliate bands, oval cartouches within scrollwork surrounds, the one to the front engraved with presentation inscriptions, two scrolled handles, diameter 23.0cm (excluding handles), weight 1244.0 grams (40.0 ozt).
Together with stand, housed in a fitted wooden case. **£1,500-2,500**



- 362 A silver trophy on stand, London 1901 by Peter Henderson Deere, of baluster form equipped with two bifurcated handles leading to floral terminals, on circular ring foot, contemporary inscription to the belly, with detachable grill for rose bowl conversion, and a turned stand, in a fitted case. 1362.0 grams (43.78 ozt) weighable. **£2,000-3,000**



Fine Jewellery, Watches & Silver, 21st May, 2026 09:30

- 363 An Arts and Crafts twin-handled silver bowl, London 1906 by Roberts & Belk Ltd., of octagonal form with flared undulating rim, pedestal stem and rim pierced with foliate design, supported on four shaped feet, presentation inscription to the front, diameter 22.0cm (excluding handles), weight 1237.9 grams (39.8 ozt).
Together with a stepped octagonal stand, housed in a fitted case. **£2,000-3,000**



- 364 Two large twin-handled silver trophies; the first is a presentation cup with cover, Sheffield 1926 by Atkin Brothers, with two leaf-capped handles, on a stepped circular foot, domed pull-off cover with urn-shaped finial, presentation inscription to the front and back, height 32.5cm; together with a trophy with angular handles on pedestal, London 1937 by Collingwood & Co., inscription to the front, height 20.0 cm; Total weight of items 2645.6 grams (85.06 Ozt) (2). **£2,000-3,000**



- 365 A silver trophy bowl, Sheffield 1930, by Cooper Brothers & Sons Ltd., of round form with moulded shell and scroll border, supported with three paw feet with foliate terminals, presentation engravings, 25.5 cm wide, 650.5 grams (20.91 ozt). **£1,000-1,500**



- 366 An Art Deco twin-handled silver trophy cup, Birmingham 1913 by Stewart Dawson & Co Ltd., the circular bowl supported on a stepped circular pedestal foot, with angular handles, presentation inscription to the front, height 24.5cm, weight 1057.5 grams (34.0 ozt).
Together with a wooden stand, housed in a fitted case. **£1,200-1,800**



- 367 A pair of Italian gilt vases, modelled as Campagna urns, egg-and-dart border, twin-handles with foliate terminals, on a pedestal with square base, stamped with Italian maker's mark '176 FI' for Pampaloni, 800 standards, height 26.0 cm, weight 2499.5 grams (80.36 ozt). **£1,800-2,200**



Fine Jewellery, Watches & Silver, 21st May, 2026 09:30

- 368 Y A cased Thai 'sterling silver' four-piece tea service; comprising a coffee pot, a teapot, a creamer, a sugar bowl, a pair of tongs and a serving tray; decorated with theppanom and foliate scrolls on fine sabre ground, deities with the Anjali Mudra hand gesture centred within pointed cartouches; the coffee and tea pots are of melon form raised on circular flared bases, hinged cover with cast elephant finials, insulators removed from the scroll handles, coffee pot 19.5 cm high; creamer and sugar bowl with gilt interior; oval serving tray with two handles, inscribed "Mr. and Mrs. D.B. Molony, with deep appreciation of your valued friendship, Thai Oil Refinery Company Limited, 16th Feb. 1962", on four bun feet, 52.5 cm wide including handles; All marked 'Cheng Thai Siam Sterling' to the base.
Total weight of items 2881.5 grams (92.64 ozt), in fitted case.
£2,000-3,000



- 369 A cased silver canteen for twelve, double-struck King's pattern, Sheffield 1948, by Cooper Brothers & Sons Ltd, comprising: six table spoons, twelve soup spoons, eleven dessert spoons, twelve dessert forks, eleven teaspoons, twelve coffee spoons, two sauce ladles, one soup ladle, twelve silver-handled table knives, twelve silver-handled dessert knives, twelve table forks, two silver-handled carving knives, two silver-handled carving forks and a silver-handled sharpening rod; 164.0 ozt (5101.1 grams) **£5,000-7,000**



- 999 *Withdrawn*

